



# Water Main Replacement

IN THE AREA OF TERRACE STREET TO GILLHAM  
ROAD, PERSHING ROAD TO W. 33RD STREET

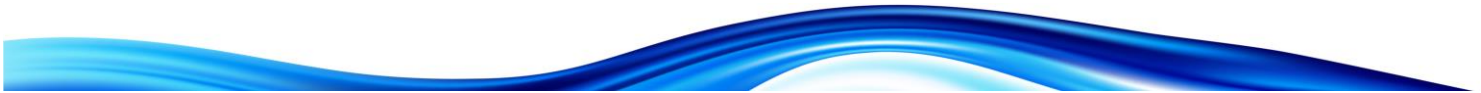


# Meeting Logistics and Protocols

- This meeting is being recorded. The recording will be posted on the KC Water website after its conclusion.
- If you wish to ask a question, please use the “Show Conversation” or “Raise Your Hand” feature at the top of your screen.
- If you are participating by phone and wish to ask a question, please address the meeting moderator when comments or questions from phone participants is requested.
- If you still have questions after the meeting, please contact the project manager. Contact information will be provided at the end of the presentation.

# Project Team

- Jeff Martin, PE Chief Engineering Officer, Water Service Department
- Melanie Jollett, PE Water Distribution Division Head
- Terry D. Thomas, Sr. KC Water Project Manager
- Bryan Wagner KC Water Inspector
- John Wright Pyramid Excavation, Project Manager



# THREE UTILITIES



Water



Wastewater



Stormwater

# ASSETS



**1 Water Treatment Plant**  
**18 Pump Stations**  
**2,800 Miles of Water Main**  
**35,000 Valves**  
**23,000 Fire Hydrants**



**6 Wastewater Treatment Plants**  
**39 Pump Stations**  
**2,800 Miles of Sewer Main**  
**67,000 Manholes**



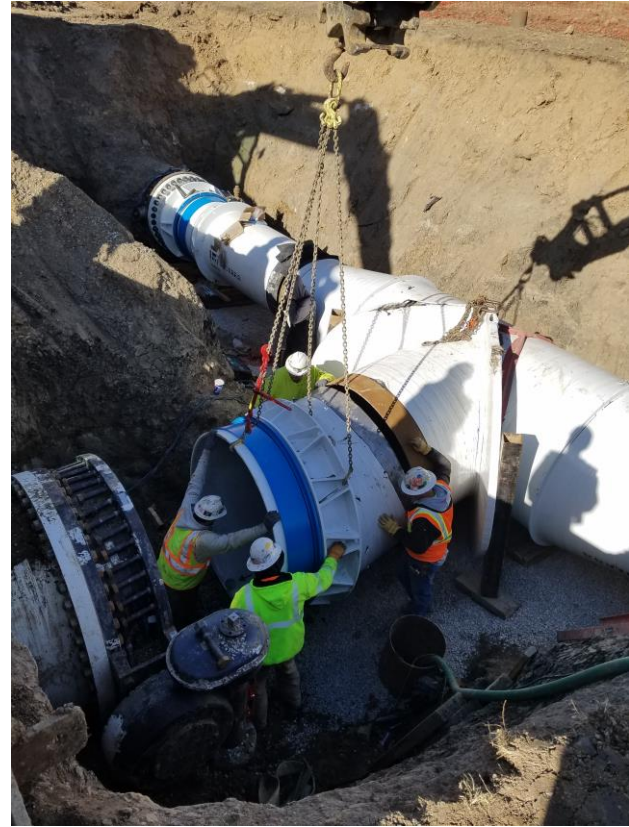
**630 Miles of Storm Sewer**  
**53,000 Storm Inlets**  
**15 Stormwater Pump Stations**  
**13.5 Miles of Levee**

# OUR WATER SOURCE



# Water Main Replacement Program

- KC Water distribution system includes ~2,800 miles of water mains.
- Some water mains date back to the 1800s.
- Aging infrastructure is a nationwide challenge.
- KC Water WMR Program is to replace **1% per year, or 28 miles**, each year.
- The WMR Program is in its 8<sup>th</sup> year, and we've replaced more than **200 miles** to date.



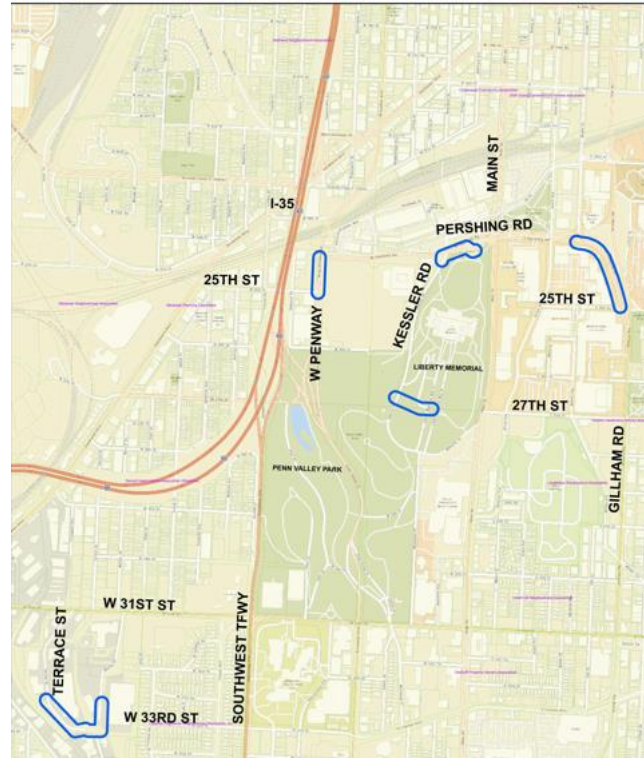
# Data-Driven Priorities

- Evaluation of water main condition
- Risk of water mains is determined based on:
  - Likelihood of Failure
  - Consequence of Failure
- WMR Projects are developed and designed; new mains are zinc coated ductile iron wrapped in a polyethylene sleeve.
- This long-term infrastructure plan will reduce service interruptions due to **breaks**, reduce **costs**, and increase **capacity and fire protection**.





# Upgrading Your Water Mains



# What Happens on Your Block

- Mark utilities and pothole to verify locations and elevations.
- Traffic control plan implemented.
- Saw cut pavement; Excavate narrow trench; Bury new pipe in gravel.
- Construct temporary connection; Test and disinfect the new water main.

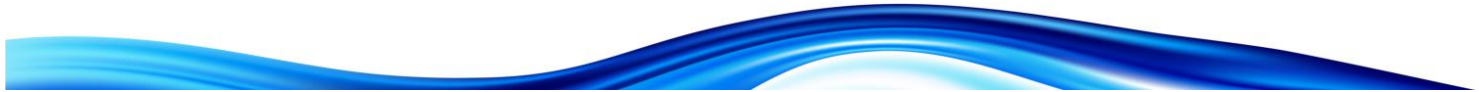
*May take a week or more; you'll see little activity*

- With both new and old water mains in service, transfer customer service lines to the new pipe.

*If your meter is inside, we'll remove it and install a new one in your yard*

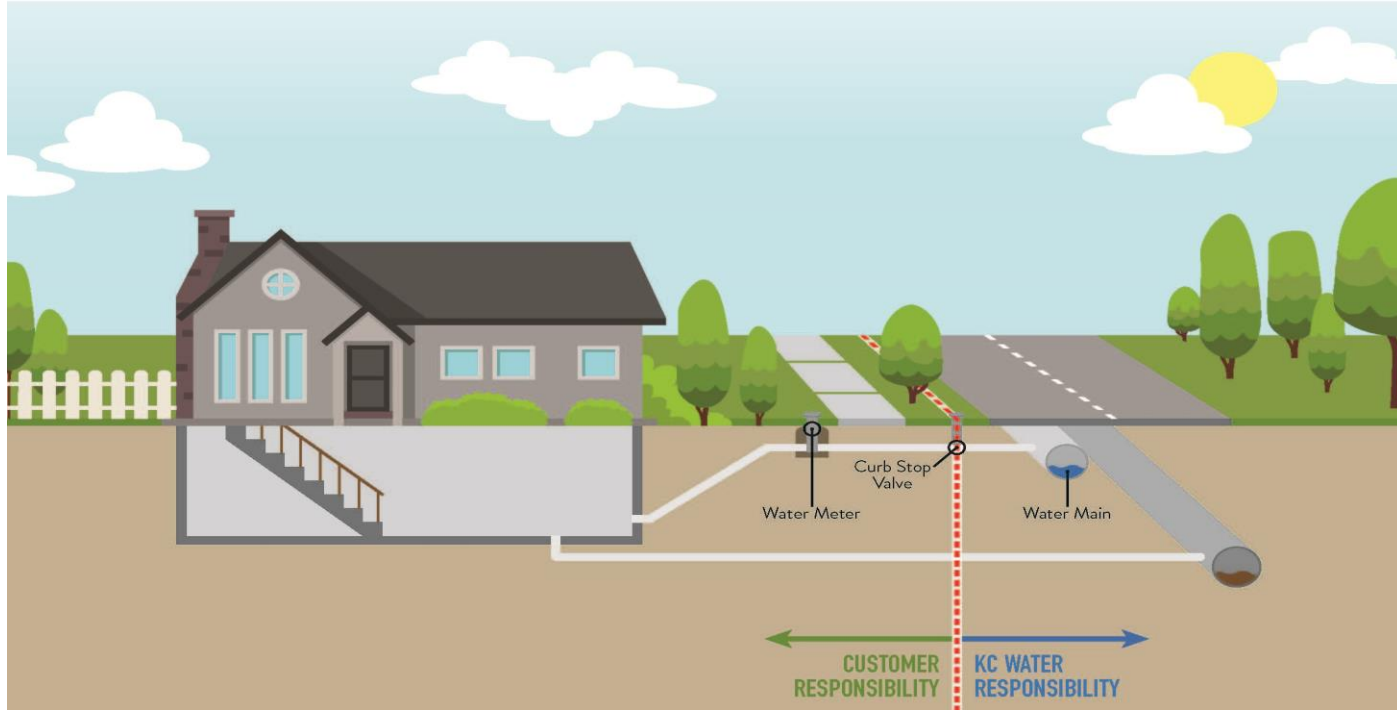
- Construct permanent connection and abandon the old water main
- Restoration – temporary and permanent

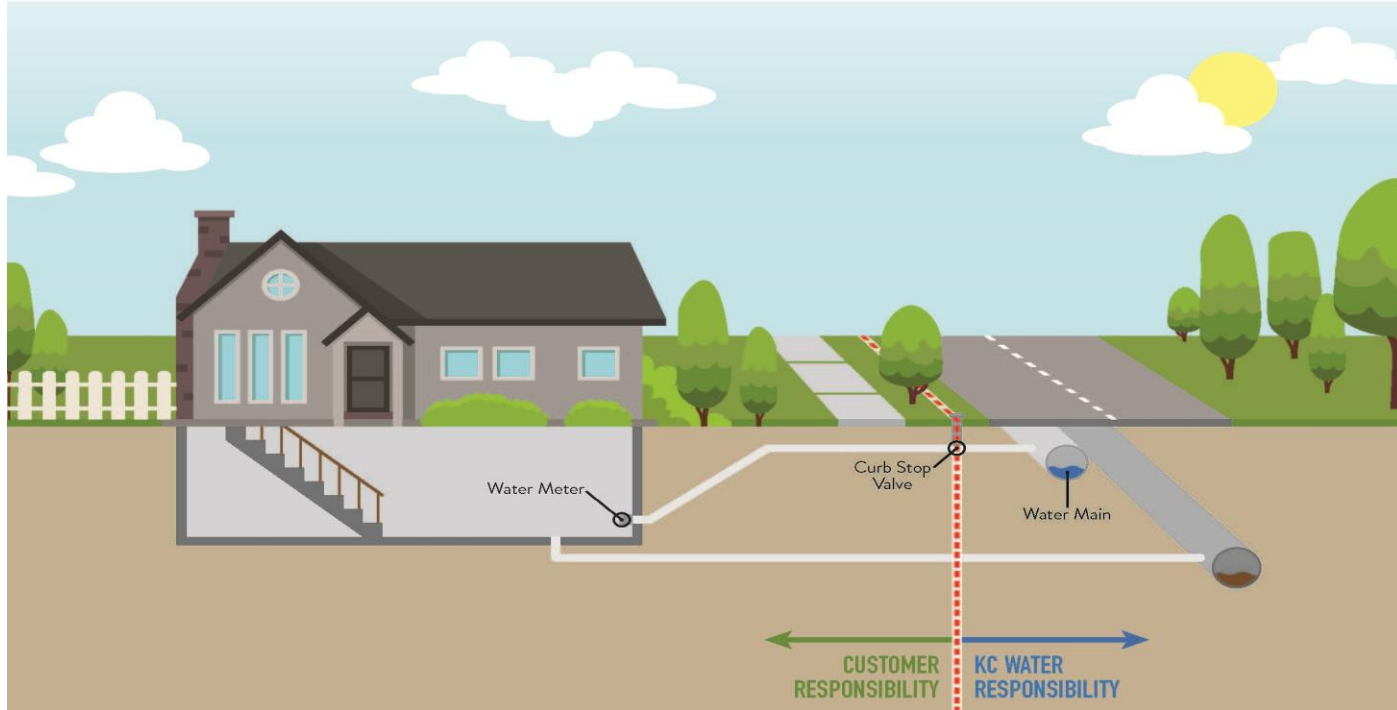
*We will restore curbs, sidewalks, driveways and, in season, lawns we disturb*



# What to Expect

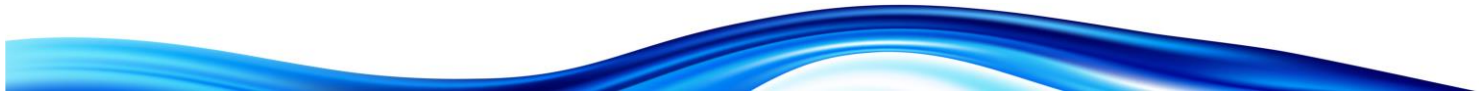
- Large equipment will be in use, creating noise and dusty conditions which will be controlled.
- Water service will be interrupted for short periods of time. You will be notified beforehand with door hangers or by other means.
- Affected curbs, driveways, and other pavement will be restored per KCMO Public Works Department Standards.
- Disturbed established lawn areas will be sodded after work is completed and as the season permits; other areas seeded.
- Ordinary travel routes may be temporarily restricted.
- Reduces the chance of a water main break in the future.
- Fire protection will be enhanced in the neighborhood.





# Project Sequencing and Duration

- August 2021 to February 2022
- Starting with Terrace Street
- Other locations to be scheduled following completion of the initial replacements.
- Contractor to provide written notice prior to start of work in your neighborhood.



# Schedule and Logistics

- Anticipated start date: August 2021
- For more information:
  - Postcard invitation to this meeting
  - [www.kcwater.us/projects/current-projects](http://www.kcwater.us/projects/current-projects) and find this project for an information sheet
  - John Wright, Pyramid Excavation, 816-768-6645
  - Bryan Wagner, KC Water Resident Inspector, 816-797-0186
  - Terry D. Thomas, KC Water Project Manager, 816-513-0262



QUESTIONS?







THANK YOU.

Terry D. Thomas, Sr., Project Manager, KC Water

[Terry.D.Thomas@kcmo.org](mailto:Terry.D.Thomas@kcmo.org)

816.513.0262

