



# Water Main Replacement

IN THE AREA OF WARD PARKWAY AND 49<sup>TH</sup> STREET  
EAST OF WORNALL ROAD



# Project Team Presenters



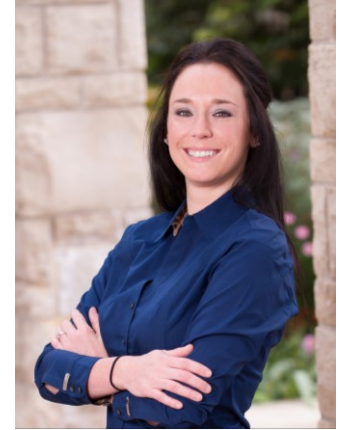
Melanie Jollett  
*KC Water  
Water Distribution  
Division Head*



Terry Thomas  
*KC Water  
Project Manager*



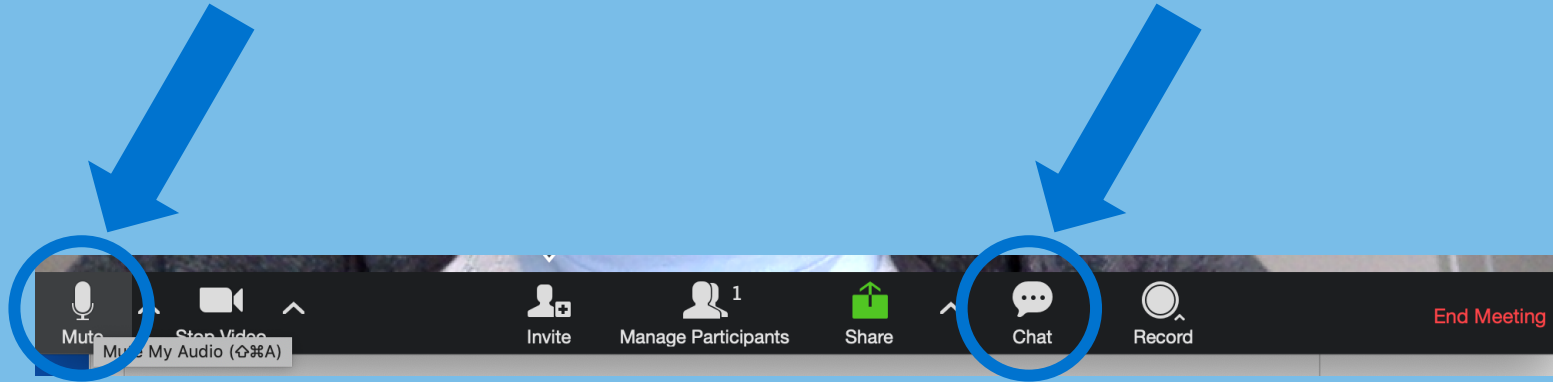
Dave Oshel  
*Leath and Sons  
Contractor*



Shelby Ferguson  
*Shockey Consulting  
Public Outreach*

# Meeting Logistics and Protocols

- Please remain muted during the presentation portions of this meeting.
- Having technical issues? Have a question? Use the chat function and someone from our team will respond and help!



# Meeting Logistics and Protocols

- Join by phone for audio. Instructions can be found in the chat.
  - \*6 – mute/unmute
  - \*9 – raise your hand
- This meeting is being recorded. The recording will be posted on the KC Water website after its conclusion.
- If you still have questions after the meeting, please contact the project manager. Contact information will be provided at the end of the presentation.

# OUR WATER SOURCE



# THREE UTILITIES



Water



Wastewater



Stormwater



# ASSETS



**1 Water Treatment Plant**  
**18 Pump Stations**  
**2,800 Miles of Water Main**  
**35,000 Valves**  
**23,000 Fire Hydrants**



**6 Wastewater Treatment Plants**  
**39 Pump Stations**  
**2,800 Miles of Sewer Main**  
**67,000 Manholes**



**630 Miles of Storm Sewer**  
**53,000 Storm Inlets**  
**15 Stormwater Pump Stations**  
**13.5 Miles of Levee**

# WATER MAIN REPLACEMENT





# Replacing Water Mains: Infrastructure Challenge

- KC Water maintains more than 2,800 miles of drinking water infrastructure.
- Some water mains date back to the 1800s.
- Aging infrastructure is a nationwide challenge.
- KC Water's solution is to replace **1% per year, or 28 miles**, each year.
- Since the start of the program, we've replaced more than **200 miles**.



# Data-Driven Priorities

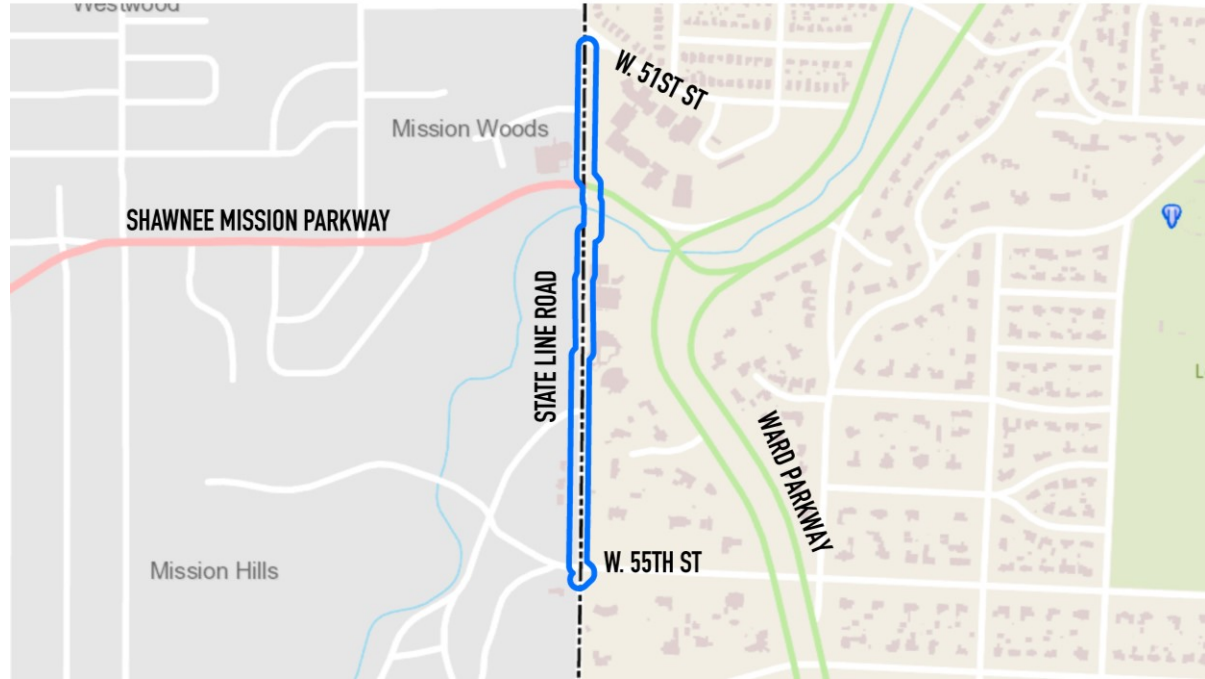
- The water mains with the highest risk are replaced first.
- Each pipe section is rated on two factors:
  - Probability of Failure
  - Consequence of Failure
- New pipe consists of zinc-coated ductile iron pipe wrapped in a polyethylene sleeve and is designed last **100 years** or more.
- This long-term infrastructure plan will reduce service interruptions due to **breaks**, reduce **costs**, and increase **capacity and fire protection**.



# Upgrades on the Plaza Project Area

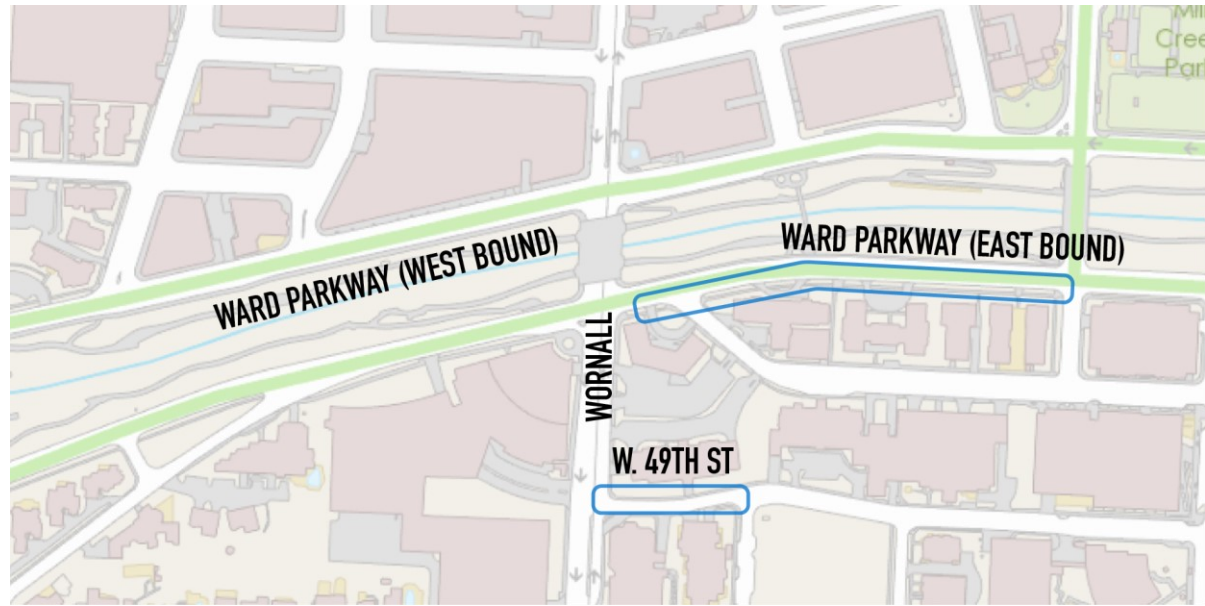
State Line Road

*(February 2021 – May 2021)*



# Upgrades on the Plaza Project Area

Ward Parkway/49<sup>th</sup> Street  
*(February 2021 – May 2021)*

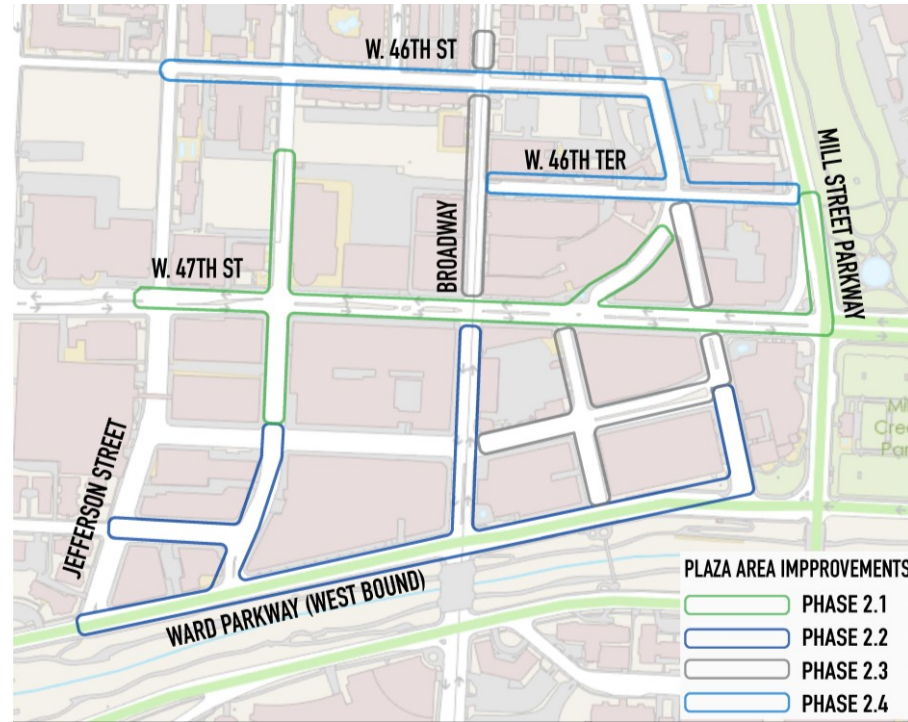




# Upgrades on the Plaza Project Area

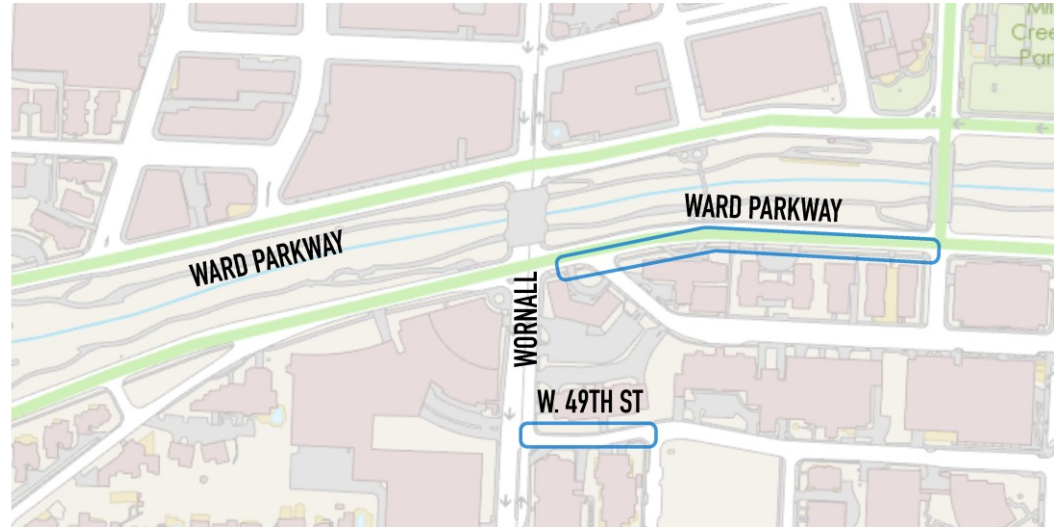
On the Plaza

*(May 2021 – March 2022)*



# Ward Parkway and 49<sup>th</sup> Street Water Main Replacement

- Boundaries:
  - North: Ward Parkway
  - South: W. 49<sup>th</sup> Street
- 4,300 linear feet of water main
- Size of mains
  - 8"
  - 12"
- New valves and fire hydrants along the corridor.





# Anticipated Schedule

- Anticipated start date: February 22, 2021 (weather pending)
- Project schedule: Mid-February to May 2021 (Phase 1)
- Water main replacement to start at Ward Parkway going east to Mill Creek Parkway; followed by 49<sup>th</sup> Street from Wornall Road east to Central Street.
- Ward Parkway and 49<sup>th</sup> Street will remain open to one lane of traffic.
- Overall Upgrades on the Plaza project anticipated completion March 2022

# What Happens on Your Block

- Potholing to verify location of other utilities
- Open the trench and bury new pipe

*Crews are on-site to ensure they work quickly to allow ingress and egress as quickly as possible.*

- Connect new pipe to the distribution main and test the connection

*May take a week or two; you'll see no activity*

- Turn off the old water main and turn on the new water main
- Restoration

*We will restore curbs, sidewalks, and, in season, green space we disturb. Green space restoration may be delayed base on season.*



# What to Expect

- Large equipment will be in use, creating noise and dusty conditions which will be controlled.
- Water service will be interrupted for short periods of time. You will be notified beforehand with door hangers or by other means.
- Affected curbs, driveways, and other pavement will be replaced.
- Disturbed green space areas will be sodded after work is completed and as the season permits.
- Ordinary travel routes may be temporarily restricted.

KEEP INFORMED



# Keep Informed

- Hotline 816-206-1318
- Email:  
[water.upgradesontheplaza@kcmo.org](mailto:water.upgradesontheplaza@kcmo.org)
- Project Webpage :  
[kcwater.us/upgradesontheplaza](http://kcwater.us/upgradesontheplaza)
- Weekly Construction Update
  - Sign up for this at the top of the homepage
- Social Media
  - Facebook: KC Water
  - Instagram: [kcmowater](#)
  - Twitter: [@KCMOWater](#)

The screenshot shows the KC Water website's 'Projects' page. At the top, there's a navigation bar with links like HOME, CUSTOMER SUPPORT, PROJECTS, EDUCATION, NEWS, ABOUT US, PROGRAMS, and CONTACT US. A search bar is also present. Below the navigation bar, the 'Projects' section is active, displaying a list of project categories: UPGRADES ON THE PLAZA (highlighted), CAPITAL IMPROVEMENTS, CURRENT PROJECTS, and RULES AND REGULATIONS. The main content area is titled 'Protected: Upgrades on the Plaza' and contains text about infrastructure improvements along State Line Road and W. 46th Street. It also lists virtual public meeting dates and times. At the bottom, there's a 'Weekly Construction Update Sign-up' form with fields for Contact Email, First Name, and Last Name. The form is highlighted with a green border.

**KC WATER**

PAY BILL MY ACCOUNT

HOME CUSTOMER SUPPORT PROJECTS EDUCATION NEWS ABOUT US PROGRAMS CONTACT US Search

Projects HOME / PROJECTS / PROTECTED: UPGRADES ON THE PLAZA

**UPGRADES ON THE PLAZA**

CAPITAL IMPROVEMENTS

CURRENT PROJECTS

RULES AND REGULATIONS

**Protected: Upgrades on the Plaza**

KC Water will be making improvements to upgrade the aging water and sewer infrastructure along State Line Road to Mill Street Parkway (Phase I), and W.46th Street to W. 55th Street (Phase II). This work is part of KC Water's long-term infrastructure plan which will reduce service interruptions due to breaks, reduce costs, and increase capacity and fire protection.

When will the work be done?

Where are the project boundaries?

**Stay informed**

KC Water will host two virtual public meetings to discuss construction impacts of the Upgrades on the Plaza project. During this meeting, participants will learn about why KC Water is completing the improvements, which areas will be affected by construction, the construction schedule, and how to stay informed on project details.

**Upgrades on the Plaza Virtual Public Meeting Dates and Times:**

Phase 1 (State Line Road)

- Tuesday, February 9th, 6:00 PM

[Link to join State Line Road phase public meeting](#)

Meeting ID: 896 8737 9603, Passcode: 449339

Or call 253-215-8782 (toll) to join the meeting by telephone

Phase 2 (Plaza Area)

- TBD – late April early May

**Weekly Construction Update Sign-up**

Contact Email

First Name

Last Name



# QUESTIONS?

Terry Thomas

[Terry.D.Thomas@kcmo.org](mailto:Terry.D.Thomas@kcmo.org)

816.513.0262

