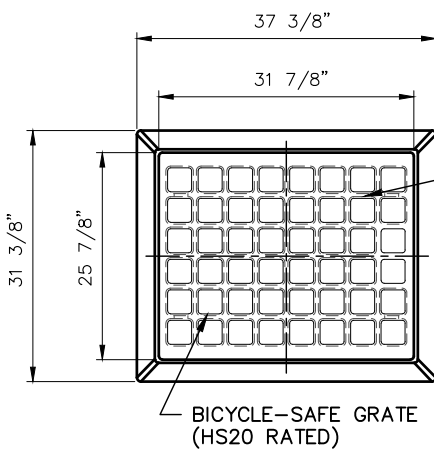
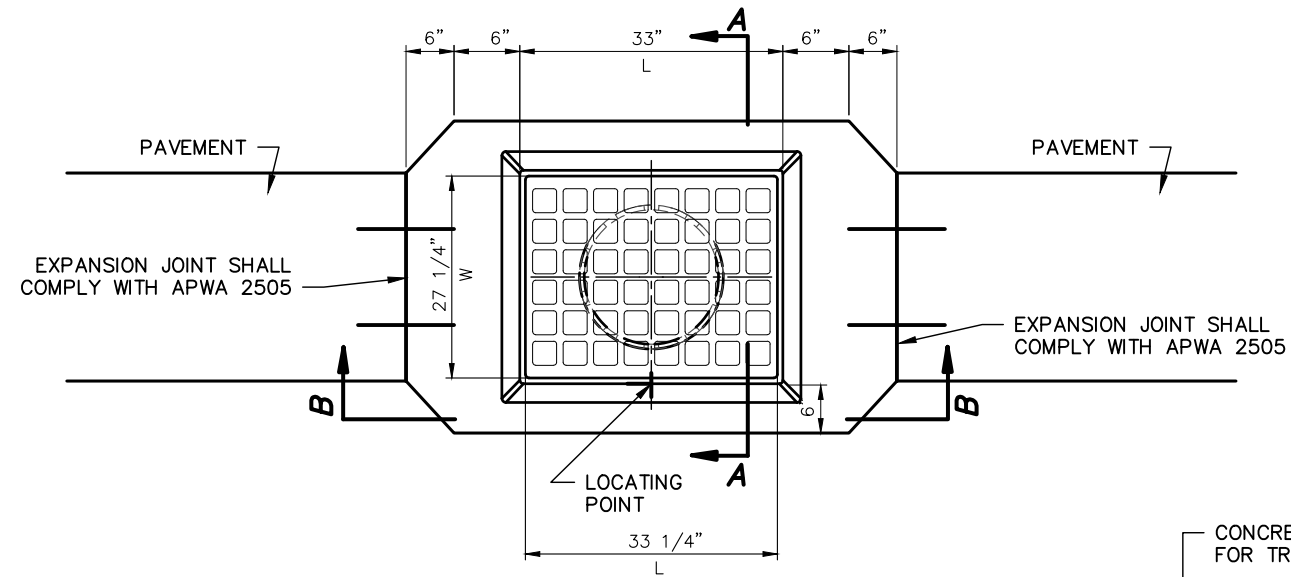
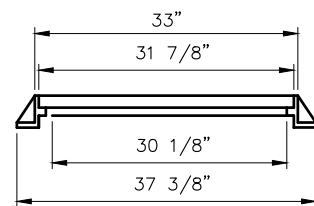


1 February 2021 1:1 MONOCHROME.CTB KIPPER, BRIAN P:\DESIGN DRAFTING\KCMO\STANDARD & SPEC DRAWINGS\STORMWATER\STORMINLET-GRATEDetails\GI-3.DWG

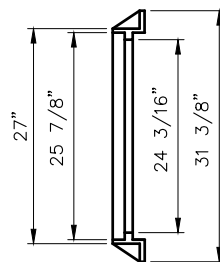


**TOP VIEW**  
**GRATE DETAIL**  
SCALE: 1/2" = 1'-0"

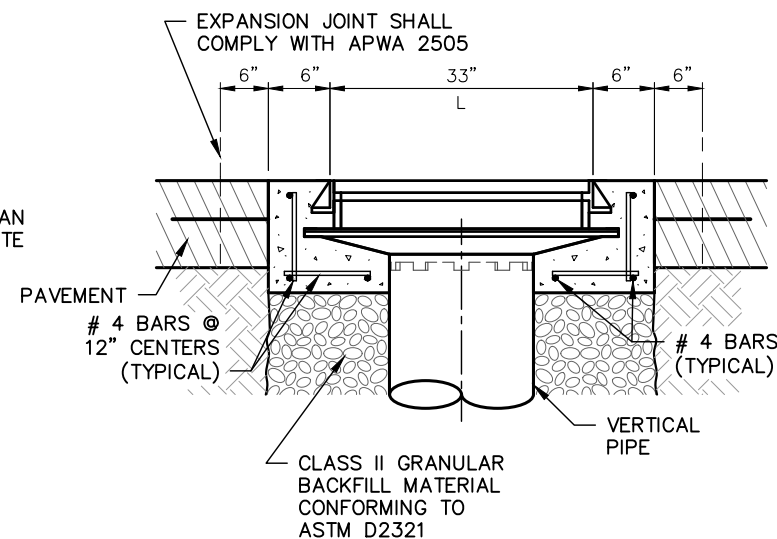


**FRONT VIEW**

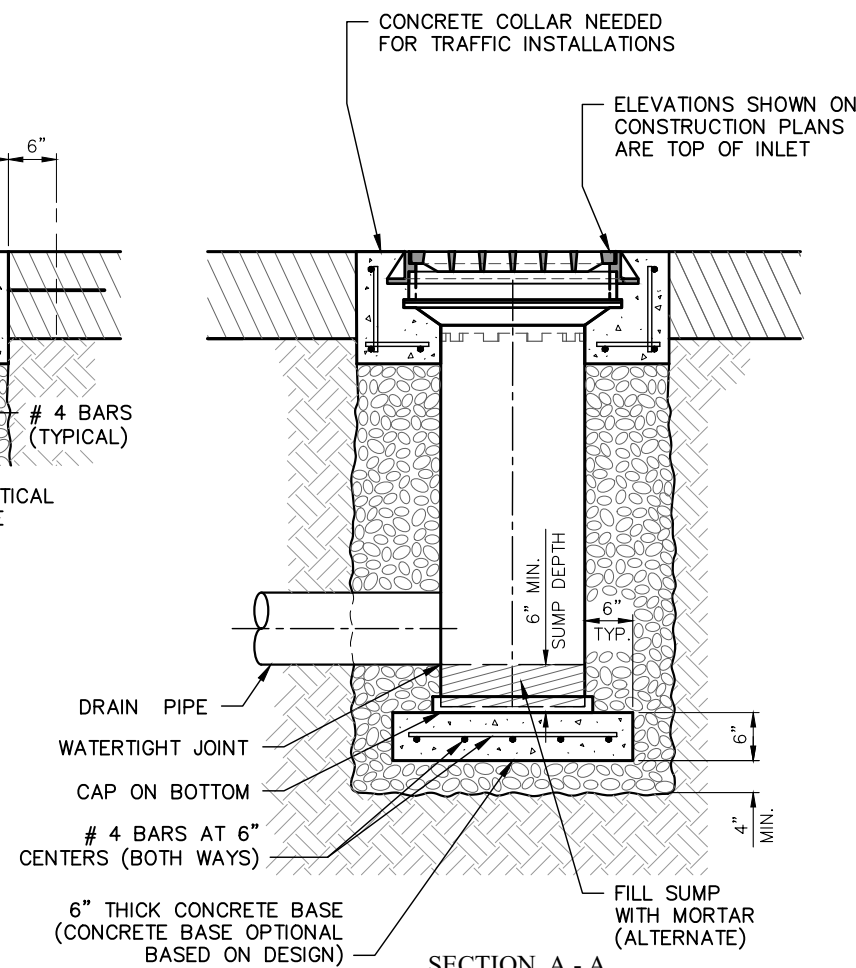
**GRATE FRAME DETAIL**  
SCALE: 1/2" = 1'-0"



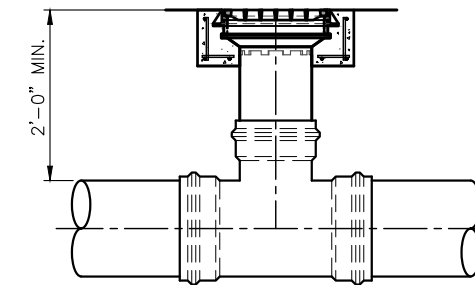
**SIDE VIEW**



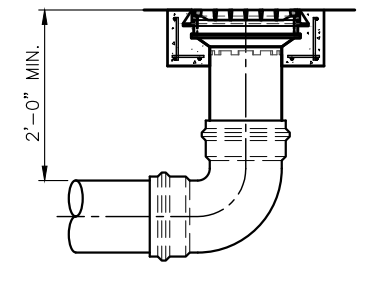
**SECTION B - B**  
**GRATE INLET**  
SCALE: 1/2" = 1'-0"



**SECTION A - A**  
**GRATE INLET**  
SCALE: 1/2" = 1'-0"



**SECTION A - A**  
**ALTERNATE TEE**  
**OPTION DETAIL**  
NOT TO SCALE



**SECTION A - A**  
**ALTERNATE BEND**  
**OPTION DETAIL**  
NOT TO SCALE

**NOTES:**

1. ALL WORK SHALL MEET THE REQUIREMENTS OF APWA-KCMO 2600.
2. CURB INLET TYPE 4, CI-4, SHALL BE USED IN LIMITED SPACE CONDITIONS AND WHEN FLOWS ARE WITHIN INLET CAPACITY ONLY WITH WATER SERVICES' APPROVAL.
3. INLETS SHALL BE SET LEVEL.
4. THE FIRST DIMENSION LISTED IN THE CONSTRUCTION NOTES IS THE "L" DIMENSION. THE SECOND DIMENSION IS THE "W" DIMENSION.
5. BEVEL ALL EXPOSED EDGES WITH 3/4" CHAMFER OR 1/2" TOOLED EDGE.
6. STORM SEWER STRUCTURES MAY BE POURED IN PLACE AS APPROVED BY WATER SERVICES.
7. FLOOR OF INLET SHALL BE SHAPED WITH INVERT TO PROVIDE SMOOTH FLOW.
8. REINFORCING STEEL SHALL BE NEW BILLET, MINIMUM GRADE 60 AS PER ASTM A615, AND SHALL BE BENT COLD.
9. ALL DIMENSIONS RELATIVE TO REINFORCING STEEL ARE TO CENTERLINE OF BARS. 2" CLEARANCE SHALL BE PROVIDED THROUGHOUT UNLESS NOTED OTHERWISE. TOLERANCE OF +/- 1/8" SHALL BE PERMITTED.
10. ALL CURB INLET TOPS ARE TO BE CONSTRUCTED AFTER FINAL CURB LINE HAS BEEN APPROVED BY THE CITY AND PRIOR TO CURB CONSTRUCTION.
11. THE STRUCTURE ELEVATION SHOWN ON THE PLANS IS THE TOP SURFACE OVER THE LOCATING POINT.
12. ALL SURFACES CONTACTING SIDE AND BACK OF INLET SHALL MATCH AT EDGE OF LID TOP.
13. THE VERTICAL PIPE SHALL BE 12" MINIMUM RCP CLASS III OR HIGHER; DUCTILE IRON PIPE, CLASS 52; PVC SDR 26 OR APPROVED EQUAL.
14. ALL CONCRETE SHALL BE 4,000 PSI MINIMUM.
15. A 1/2" JOINT FILLER SHALL BE PLACED BETWEEN ADJOINING CONCRETE SURFACES AND INLET.
16. TRAFFIC LOADS H25 WITH CONCRETE COLLAR.
17. CONCRETE BASE OPTIONAL BASED ON DESIGN.

DO NOT SCALE THESE DRAWINGS FOR DIMENSIONS OR CLEARANCES. ANY QUESTIONS REGARDING DIMENSIONS SHALL BE BROUGHT TO THE ATTENTION OF THE CITY PRIOR TO CONSTRUCTION.

NO.	DATE	BY	NATURE
REVISIONS			

**THERMO-MOLDED GRATE INLET**  
**LIMITED SPACE - TYPE DETAILS**

WATER SERVICES  
CITY OF KANSAS CITY, MISSOURI

DEVELOPED BY:  
STORMWATER STANDARDS

DRAWING NO. **GI-3**

APPROVED BY: \_\_\_\_\_  
DATE: 5/19/2020