



smartsewer

# INFRASTRUCTURE UPDATE

## 15TH STREET PUMP STATION UPGRADE AND SEWER SEPARATION PROJECT

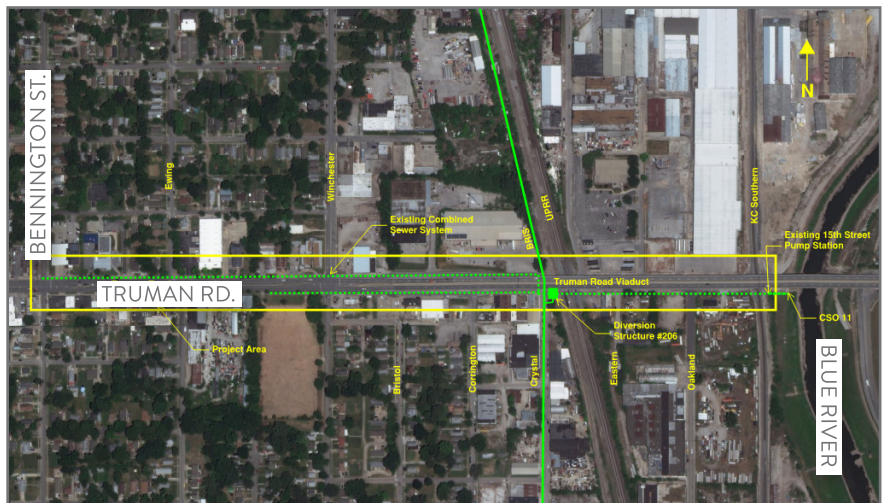
CONSTRUCTION SCHEDULED FOR: JUNE 2021 – OCTOBER 2022

KC Water is working to design and construct important improvements to the wastewater system in your neighborhood. This project will involve separating the existing combined sewer system into separate storm and sanitary sewers, as well as improving the City's 15th Street Pump Station. When complete, the project will improve the capacity of the wastewater collection system and lessen the frequency of sewer overflows into local waterways and the potential for basement backups.

### PROJECT AREA

THIS PROJECT IS LOCATED WITHIN THE LOWER BLUE RIVER BASIN. THE BOUNDARIES ARE:

- NORTH: E. 14TH STREET
- SOUTH: E. 15TH TERRACE
- EAST: BLUE RIVER
- WEST: BENNINGTON STREET



### QUESTIONS?

TO LEARN MORE, PLEASE CONTACT:

#### WILLIE WILLIAMS P.E.

Project Manager  
Burns & McDonnell

(816) 447-9871

wgwilliams@burnsmcd.com

#### TIM SCHNELLER P.E.

Design Professional Project Manager  
George Butler Associates

(913) 577-8374

tschneller@gbateam.com



# 15TH STREET PUMP STATION UPGRADE AND SEWER SEPARATION PROJECT

## WHAT'S BEING DONE?

This project includes:

- Separating approximately 22 acres of the City's combined sewer system
- System improvements to the existing 15th Street Pump Station

## WHY SEPARATE THE SEWERS?

In your area, one sewer pipe carries both wastewater and stormwater. This is called a combined sewer system. When it rains, the combined sewer system must carry both rainwater and wastewater. When wet weather flows overload the system, the combined sewer system is designed to discharge diluted wastewater directly into local waterways. For this project, KC Water will be installing a second piping system to separate stormwater and wastewater flows, helping to reduce the frequency and volume of sewer overflows into local waterways. This improves water quality while protecting our natural environment and public health.

## WHAT'S THE TIMELINE?

Design is scheduled to be completed by January 2021. Construction is anticipated to begin in June 2021 and end in October 2022.

## WHAT CAN YOU EXPECT?

We appreciate your support and patience as we work to complete this important community project. Customers will be notified in advance of pending disruptions, which may include:

- Large equipment creating noise and dusty conditions
- Temporary lane closures
- Temporary traffic disruptions
- Temporary sewer service disruptions

## WHO'S DOING THE WORK?

KC Water will be assisted by its program manager, Burns & McDonnell, and its design professional, George Butler Associates. The construction contractor has not yet been determined and will be selected through the City's open bid process.

## WHAT'S THE CONTRACT AMOUNT?

The total budget for this project is currently \$4,100,000.

## WHAT'S THE "CONSENT DECREE"?

In 2010, the City of Kansas City, Missouri entered into a federal Consent Decree with the United States Environmental Protection Agency to reduce the volume and frequency of overflows from the City's sewer system. KC Water's Smart Sewer program is a 25-year plan to address this challenge. The 15th Street Pump Station Upgrade and Sewer Separation Project is one piece of the Smart Sewer program, and is required by the Consent Decree to be completed by December 31, 2022.