

INVESTING IN KC



WATER MAIN REPLACEMENT

N. Troost to N. Cleveland, NE 46th Street to NE Englewood Road

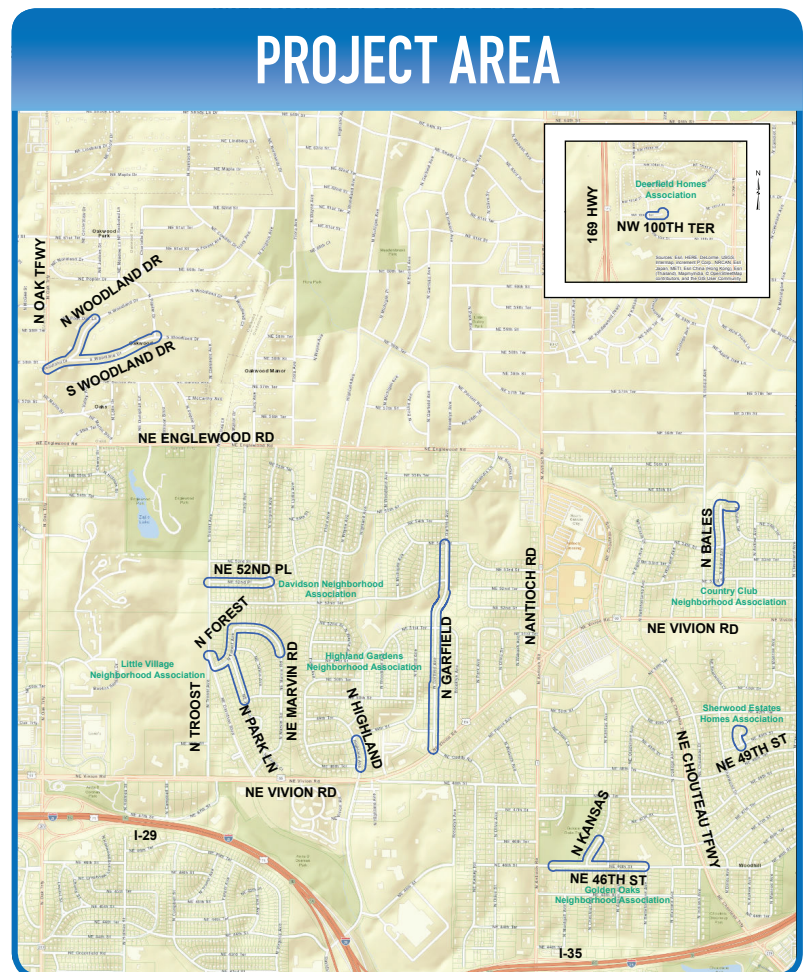
Replacing approximately 14,403 total feet of break-prone 4-inch, 6-inch, and 8-inch cast iron pipe water mains in the area of N. Troost Avenue to N. Cleveland Avenue, N.E. 46th Street to N.E. Englewood Road.

PUBLIC MEETING

What: Water Main Replacement

When: Monday, March 18, 2019, 6 p.m.

Where: Northland Neighborhoods Inc.
4420 NE Chouteau Trafficway
Kansas City, MO 64117



— Project Work

March 2019 to November 2019

YOUR INVESTMENTS AT WORK

WATER MAIN REPLACEMENT

In the Area of N. Troost to N. Cleveland, NE 46th Street to NE Englewood Road

WHAT

- Important infrastructure work will be performed in your neighborhood.
- Water mains will be replaced and realigned throughout the project.

WHY

- KC Water is undertaking this project to improve distribution system reliability, increase hydraulic conveyance capacity, and support fire protection.

WHEN

- Weather permitting, work will begin in March 2019 and conclude approximately November 2019.

WHO

- KC Water in partnership with Blue Nile Contractors.

WHAT TO EXPECT

- Large equipment will be used, creating noise and dusty conditions, which will be controlled.
- Affected curbs, driveways, and other pavement will be replaced.
- Disturbed lawn areas will be seeded after work is completed and as the season permits.
- Ordinary travel routes may be temporarily restricted.

IMPROVEMENTS

- Fewer anticipated water main breaks
- Increased reliability
- Fewer service disruptions
- Enhanced neighborhood fire protection

WHERE

- Replacing 6-inch cast iron pipe with 961 linear feet of 8-inch ductile iron pipe along N.E. 52nd Place, N. Troost Avenue to N. Virginia Avenue.
- Replacing 4-inch cast iron pipe with 1,860 linear feet of 8-inch ductile iron pipe along N. Forest Avenue and N.E. Marvin Road, N.E. Davidson Road to 5048 NE Marvin Road.
- Replacing 4-inch cast iron pipe with 829 linear feet of 8-inch ductile iron pipe along N.E. Park Lane, N. Forest Avenue to N.E. 50th Street.
- Replacing 4-inch cast iron pipe with 578 linear feet of 8-inch ductile iron pipe and 31 linear feet of 6-inch ductile iron pipe along N. Highland Avenue, N.E. 48th Terrace to N.E. 49th Street.
- Replacing 4-inch and 8-inch cast iron pipe with 3,442 linear feet of 8-inch ductile iron pipe and 42 linear feet of 6-inch ductile iron pipe along N. Garfield Avenue, N.E. Vivion Road to N.E. 54th Street.
- Replacing 4-inch cast iron pipe with 1,453 linear feet of 12-inch ductile iron pipe and 34 linear feet of 6-inch/8-inch ductile iron pipe along N.E. 46th Street, 300 feet east of N.E. Antioch Road to N. Bellefontaine Avenue.
- Replacing 6-inch cast iron pipe with 471 linear feet of 8-inch ductile iron pipe and 10 linear feet of 6-inch ductile iron pipe along N. Kansas Avenue, N.E. 46th Street to N. Agnes Avenue.
- Replacing 2-inch cast iron pipe and 6-inch cast iron pipe with 351 linear feet of 6-inch ductile iron pipe along N. Askew, N.E. 49th Street to north end of cul-de-sac.

QUESTIONS?

Specific questions about this project can be directed to:

- Moses Banks, Resident Inspector, 816-216-8275 or moses.banks@kcmo.org
- Frank Applegate, Superintendent, Blue Nile Contractors, 816-379-9962 or frank@bluenilecontractors.com
- Kelly Finn, Project Manager, KC Water, 816-513-0351 or kelly.finn@kcmo.org
- Replacing 6-inch cast iron pipe with 1,385 linear feet of 8-inch ductile iron pipe and 39 linear feet of 6-inch ductile iron pipe along N. Bales Avenue, N.E. 53rd Street to N. Bales Terrace.
- Replacing 2-inch and 4-inch cast iron pipe with 1,838 linear feet of 8-inch ductile iron pipe along S. Woodland Drive, N. Oak Trafficway to N. Poplar Drive.
- Replacing 2-inch cast iron pipe with 791 linear feet of 8-inch ductile iron pipe along N. Woodland Drive, S. Woodland Drive to N.E. Post Oak Lane.
- Replacing 2-inch cast iron pipe with 288 linear feet of 6-inch ductile iron pipe along N.W. 100th Terrace from N. Wyandotte Avenue to end of cul-de-sac.



www.kcwaterservices.org

