

CAPITAL IMPROVEMENTS PROGRAM

# FY 2015 | Project Rollout

FEBRUARY 18, 2014



KANSAS CITY  
MISSOURI



**KCWATER**  
SERVICES



# Welcome.

TERRY LEEDS, DIRECTOR OF WATER SERVICES

# Agenda

- About Kansas City Water Services
- FY 2014 Highlights
- Water Services' 5 Year Capital Improvements Program
- FY 2015 Program Highlights
- FY 2015 Design & Construction Projects
  - Water
  - Wastewater
  - Stormwater



ABOUT

# Kansas City Water Services

# Kansas City Water Services



Water



Wastewater



Stormwater



# FY 2014 Highlights

# *\$175 M Investment, 85+ Projects*



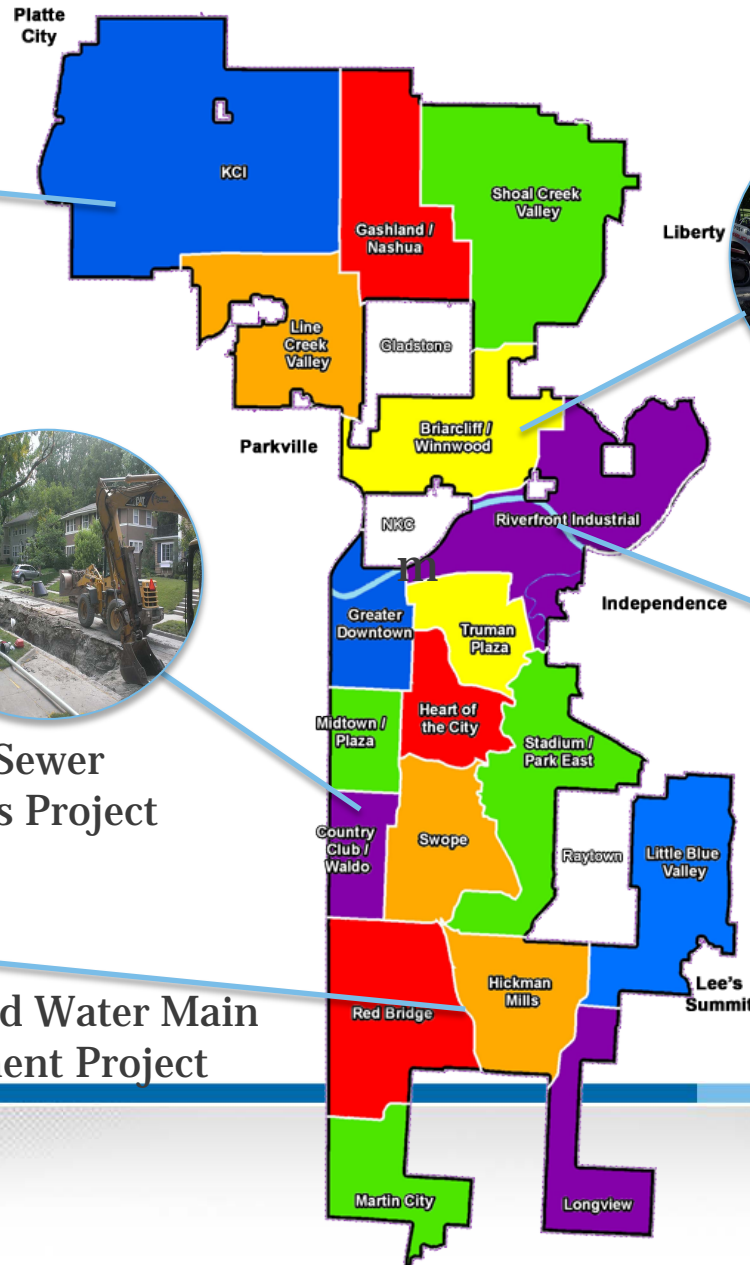
First & Second Creek  
Sewer Expansion Project



Brookside Sewer  
Improvements Project



Holmes Road Water Main  
Replacement Project



Small Main  
Replacement Program



Blue River Disinfection  
Improvements Project

# Utility Projects: FY 2014

## **Emergency Power Generation Phase II**

- \$3,200,000 | March 4, 2014 | Water Pump Station

## **Concrete Rehabilitation Phase V** *Flat Work and Intake*

- \$2,000,000 | March 11, 2014 | Water Treatment

## **Water Treatment Plant** *West Header and Valves at Secondary*

- \$2,200,000 | March 25, 2014 | Water Treatment

# Utility Projects: FY 2014

## **City Wide Curb Stop Replacement**

- \$3,000,000 | March 2014 | Water Distribution

## **City Wide Service Line Kill Contract**

- \$1,000,000 | March 2014 | Water Distribution

## **City Wide Air Release Valve Replacement**

- \$600,000 | March 2014 | Water Distribution

# Utility Projects: FY 2014

## **Harlem Sewer Force Main Rehabilitation**

- \$1,200,000 | March 2014 | Wastewater Collection

## **Green Infrastructure Pilot Project**

- \$400,000 | March 2014 | DPS/ Wastewater OCP

## **East Bottoms Pump Station Rehab Phase II**

- \$2,400,000 | April 2014 | Water Pump Station



WATER SERVICES' FIVE YEAR

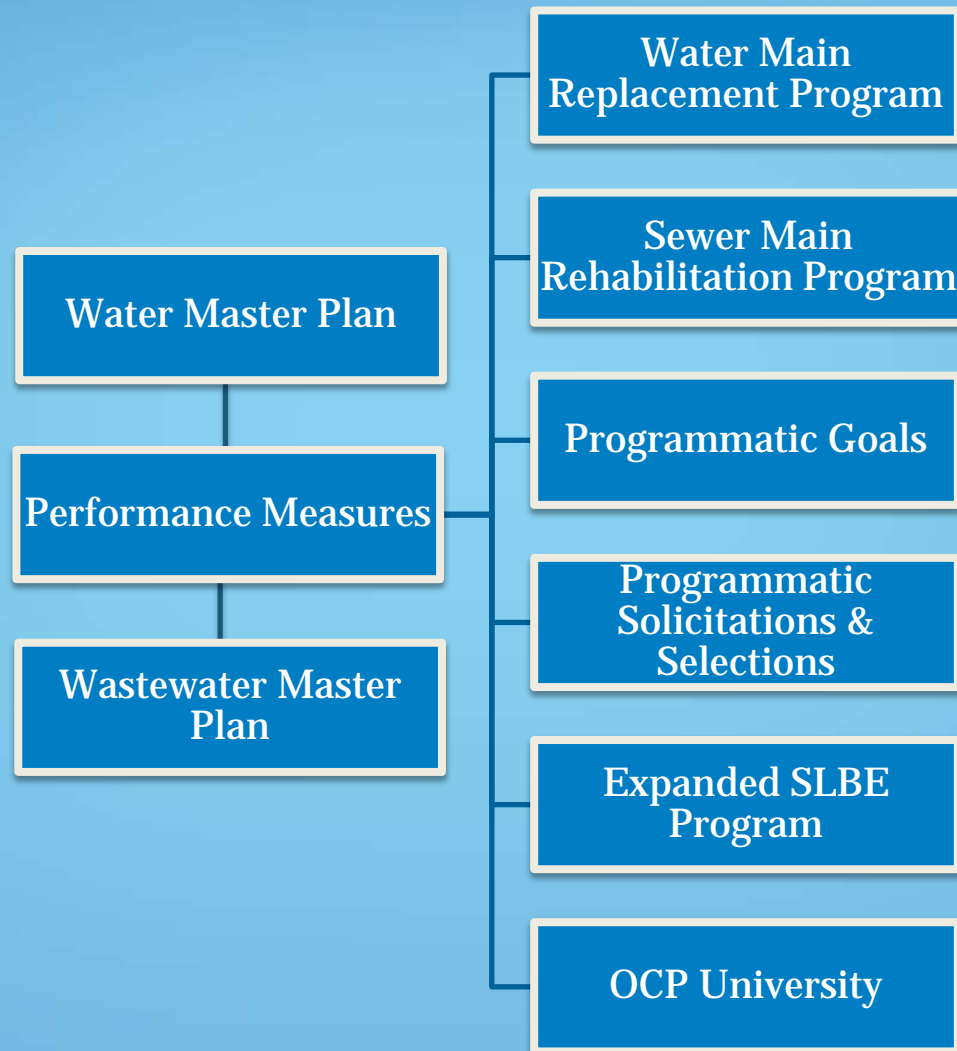
# Capital Improvements Program FY 2015 - 2019

# Water Services' Capital Improvements Program

*A customer-focused plan for KC's largest infrastructure investment.*

- \$1 billion investment over 5 years
- Over 18,000 direct and indirect jobs created
- Projects designed to:
  - Improve water quality
  - Protect public health
  - Increase system reliability
  - Meet regulatory requirements
  - Promote development
  - Building infrastructure for Kansas City's future

# Capital Improvements Initiatives



# OCP University

## Educational Program for MBE, WBE & SLBE Firms:

- Business development & technical assistance
- Expands local skills and capabilities in-line with project needs
- Prepares minority firms to become prime consultants



2/6/2014

14

# 5 Year Water CIP: *Numbers by Project Type*

<b>Project Type</b>	<b>Number of Projects</b>	<b>% of Total</b>
Treatment	7	3.1%
Pump Station	7	3.1%
Transmission	6	2.6%
Distribution	207	90.8%
Storage	1	.4%
Total	228	100%

# 5 Year Water CIP: *Amounts by Project Type*

<b>Project Type</b>	<b>FY 15</b>	<b>FY 16</b>	<b>FY 17</b>	<b>FY 18</b>	<b>FY 19</b>	<b>Total</b>
Treatment	\$3,000,000	\$3,000,000	\$3,000,000	\$3,000,000	\$3,000,000	\$15,000,000
Pump Station	\$10,600,000	\$6,750,000	\$10,300,000	\$9,800,000	\$11,000,000	\$51,450,000
Transmission	\$6,365,000	\$12,520,000		\$2,500,000		\$21,385,000
Distribution	\$54,900,000	\$48,330,000	\$56,700,000	\$54,700,000	\$56,000,000	\$270,630,000
Storage	\$3,000,000					
<b>TOTAL</b>	<b>\$77,865,000</b>	<b>\$70,600,000</b>	<b>\$70,000,000</b>	<b>\$70,000,000</b>	<b>\$70,000,000</b>	<b>\$358,465,000</b>

# 5 Year Maintenance Program: Water

	<b>FY15</b>	<b>FY16</b>	<b>FY17</b>	<b>FY18</b>	<b>FY19</b>
Valve Exercising	\$1,200,000	\$1,300,000	\$600,000	\$600,000	\$600,000
Supplemental Workforce	\$2,500,000	\$2,500,000	\$2,500,000	\$2,500,000	\$2,500,000
Air Release Valves	\$300,000	\$200,000			
Curb Stops	\$1,000,000	\$500,000			
Service Line Kill	\$500,000	\$100,000			
Hydrant Repair	\$800,000	\$1,000,000	\$1,000,000	\$1,000,000	\$1,000,000
Valve Replacement	\$2,000,000	\$2,000,000	\$2,000,000	\$2,000,000	\$2,000,000
<b>TOTAL:</b>	<b>\$8,300,000</b>	<b>\$7,600,000</b>	<b>\$6,100,000</b>	<b>\$6,100,000</b>	<b>\$6,100,000</b>

# 5 Year Wastewater CIP:

## *Numbers by Project Type*

<b>Project Type</b>	<b>Number of Projects</b>	<b>% of Total</b>
Treatment	37	18%
Pump Station	4	2%
Collection Systems	40	19%
OCP	128	61%
TOTAL	209	100%

# 5 Year Wastewater CIP:

## *Amounts by Project Type*

<b>Project Type</b>	<b>FY 15</b>	<b>FY 16</b>	<b>FY 17</b>	<b>FY 18</b>	<b>FY 19</b>	<b>TOTAL</b>
WW Treatment	\$10,500,000	\$16,335,000	\$27,215,000	\$23,000,000		\$77,050,000
Pump Stations	\$2,500,000	\$5,000,000	\$7,750,000			\$15,250,000
Collection System	\$17,560,000	\$23,360,000	\$15,060,000	\$15,060,000	\$15,060,000	\$86,100,000
OCP	\$44,550,000	\$175,465,000	\$135,135,000	\$113,100,000	\$120,100,000	\$588,350,000
<b>TOTAL</b>	<b>\$75,110,000</b>	<b>\$220,160,000</b>	<b>\$185,160,000</b>	<b>\$151,160,000</b>	<b>\$135,160,000</b>	<b>\$766,750,000</b>

# 5 Year Maintenance Program: Wastewater

	<b>FY15</b>	<b>FY16</b>	<b>FY17</b>	<b>FY18</b>	<b>FY 19</b>
Private Line Repair	\$3,000,000	\$3,000,000	\$3,000,000	\$3,000,000	\$3,000,000
Supplemental Workforce	\$3,000,000	\$3,000,000	\$3,000,000	\$3,000,000	\$3,000,000
CCTV	\$1,000,000	\$1,000,000	\$1,000,000	\$1,000,000	\$1,000,000
Line Cleaning	\$1,000,000	\$1,000,000	\$1,000,000	\$1,000,000	\$1,000,000
Fly-Over	\$60,000	\$60,000	\$60,000	\$60,000	\$60,000
CIPP	\$4,500,000	\$7,000,000	7,000,000	\$7,000,000	\$7,000,000
Main Repair	\$3,000,000	\$3,000,000	\$3,000,000	\$3,000,000	\$3,000,000
<b>TOTAL:</b>	<b>\$15,560,000</b>	<b>\$18,060,000</b>	<b>\$18,060,000</b>	<b>\$18,060,000</b>	<b>\$18,060,000</b>

# FY 15 Year Stormwater CIP:

## *Numbers by Project Type*

Project Type	Number of Projects	% of Total
Stormwater	7	47%
Waterways	8	53%
Total	15	100%

# 5 Year Maintenance Program: Stormwater

	<b>FY15</b>	<b>FY16</b>	<b>FY17</b>	<b>FY18</b>	<b>FY19</b>
Levee & Channel Maintenance	\$790,000	\$790,000	\$790,000	\$790,000	\$790,000
Storm Monitoring System	\$236,500	\$236,500	\$236,500	\$236,500	\$236,500
MS4 Monitoring & Support	\$256,000	\$256,000	\$256,000	\$256,000	\$256,000
Catch Basin Replacement	\$500,000	\$500,000	\$500,000	\$500,000	\$500,000
<b>TOTAL:</b>	<b>\$1,782,500</b>	<b>\$1,782,500</b>	<b>\$1,782,500</b>	<b>\$1,782,500</b>	<b>\$1,782,500</b>



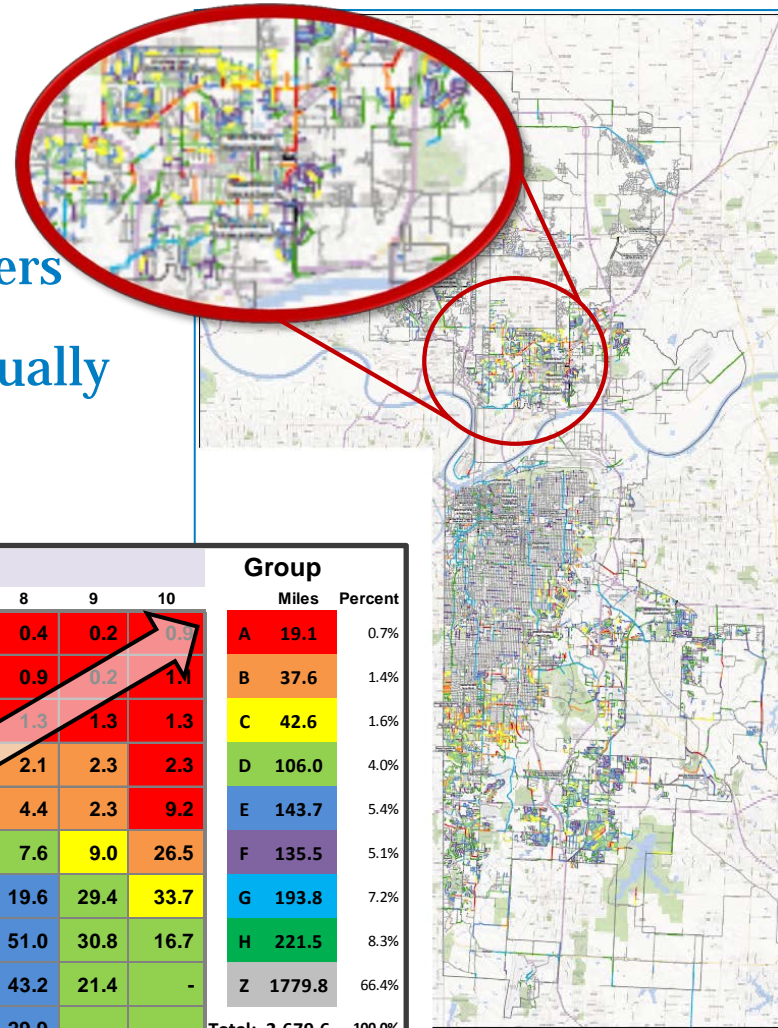
CAPITAL IMPROVEMENTS PROGRAM

# FY 2015 Program Highlights

# Water Main Replacement Program

## *Investing in the Future of Kansas City's Water Infrastructure*

- Strategic & data driven
- Proactive approach
- Fewer service interruptions for customers
- Strategically replaces 1% of system annually
- 100 Year Plan, \$30M investment/year



		Probability of Failure										Group	
		1	2	3	4	5	6	7	8	9	10	Miles	Percent
Consequence of Failure	10	165.1	13.1	7.2	3.1	1.7	0.7	1.0	0.4	0.2	0.9	A 19.1	0.7%
	9	101.4	9.0	3.1	2.3	1.0	0.6	0.5	0.9	0.2	1.1	B 37.6	1.4%
	8	47.3	10.9	7.1	3.0	2.2	1.3	0.2	1.3	1.3	1.3	C 42.6	1.6%
	7	56.8	17.8	5.7	5.2	4.6	2.5		2.1	2.3	2.3	D 106.0	4.0%
	6	8.8	24.0	20.4	9.0	7.0		3.1	4.4	2.3	9.2	E 143.7	5.4%
	5	115.4	90.2	32.6	21.8		6.8	13.8	7.6	9.0	26.5	F 135.5	5.1%
	4	10.5	47.6	43.2	62.8	19.0	28.1	14.5	19.6	29.4	33.7	G 193.8	7.2%
	3	240.6	187.4	105.7	62.8	54.4	23.4	34.5	51.0	30.8	16.7	H 221.5	8.3%
	2	52.3	230.5	133.1	24.8	6.8	30.3	65.3	43.2	21.4	-	Z 1779.8	66.4%
	1	21.7	3.8	1.7	9.8	1.3	-	0.2	29.9	-	-	Total: 2,679.6	100.0%
		Miles										Total Miles: 2,679.6	

# Sewer Rehabilitation Program



**Strategic & Data-Driven**



**Improves Service Reliability**



**\$7M Investment, 100 Years**

# Kansas City's Overflow Control Program

**\$4.5-\$5.0 billion  
Investment**

**25 Year Plan,  
Largest program in  
KC's history**

**Improving  
Water  
Quality**

**First Federal Consent  
Decree to include green  
infrastructure solutions**

**City-wide approach to  
address sewer  
overflows**

***Additional Operating & Maintenance Costs  
\$72 million per year by 2035***

# Kansas City's Overflow Control Plan

Programmatic Elements

Improved Water Quality

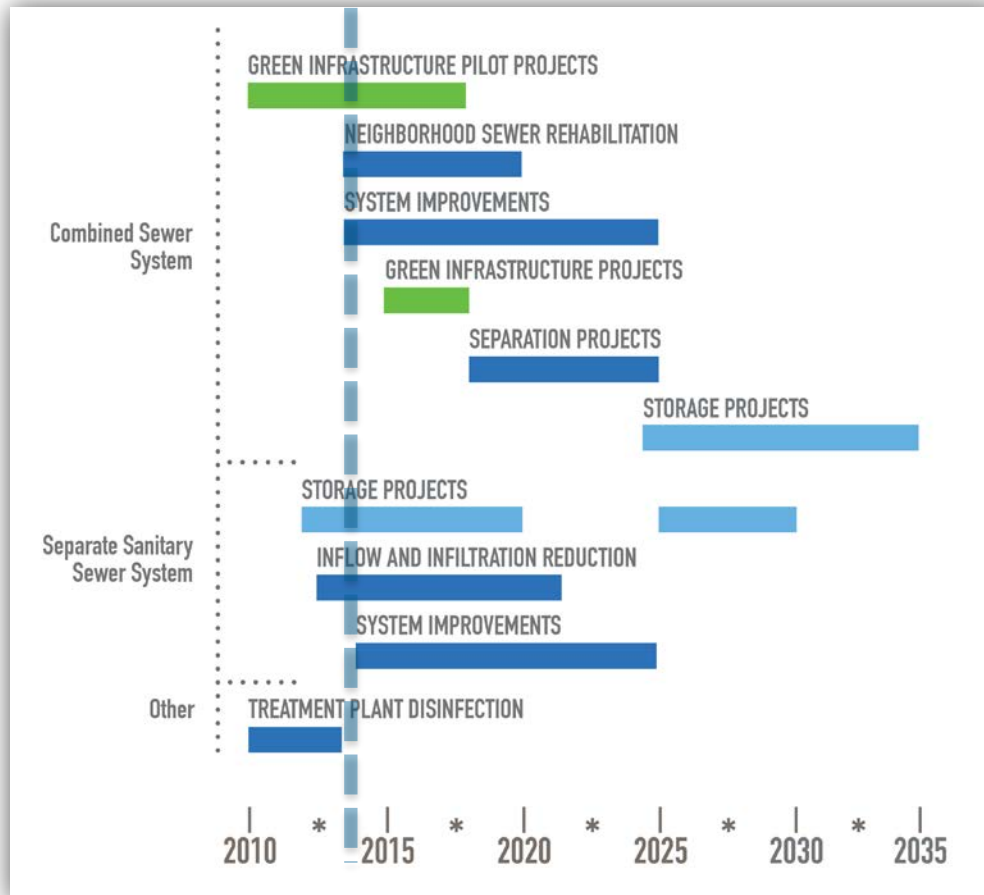
Consent  
Decree

**Overflow Control Program**

2/6/2014

27

# Program Implementation



- Year 4 of 25 year timeline
- First 10 years focus on reducing the problem and improving service
- Most early projects ramping up in planning and design phases
- First green infrastructure pilot complete
- 15 projects in pre-design for consultant selection



FISCAL YEAR 2015

# Water Infrastructure Design & Construction Projects

# Water Infrastructure: FY 15 Design

## Vivion Road 36" Transmission Main

- \$1,600,000 | June 2014 | Transmission



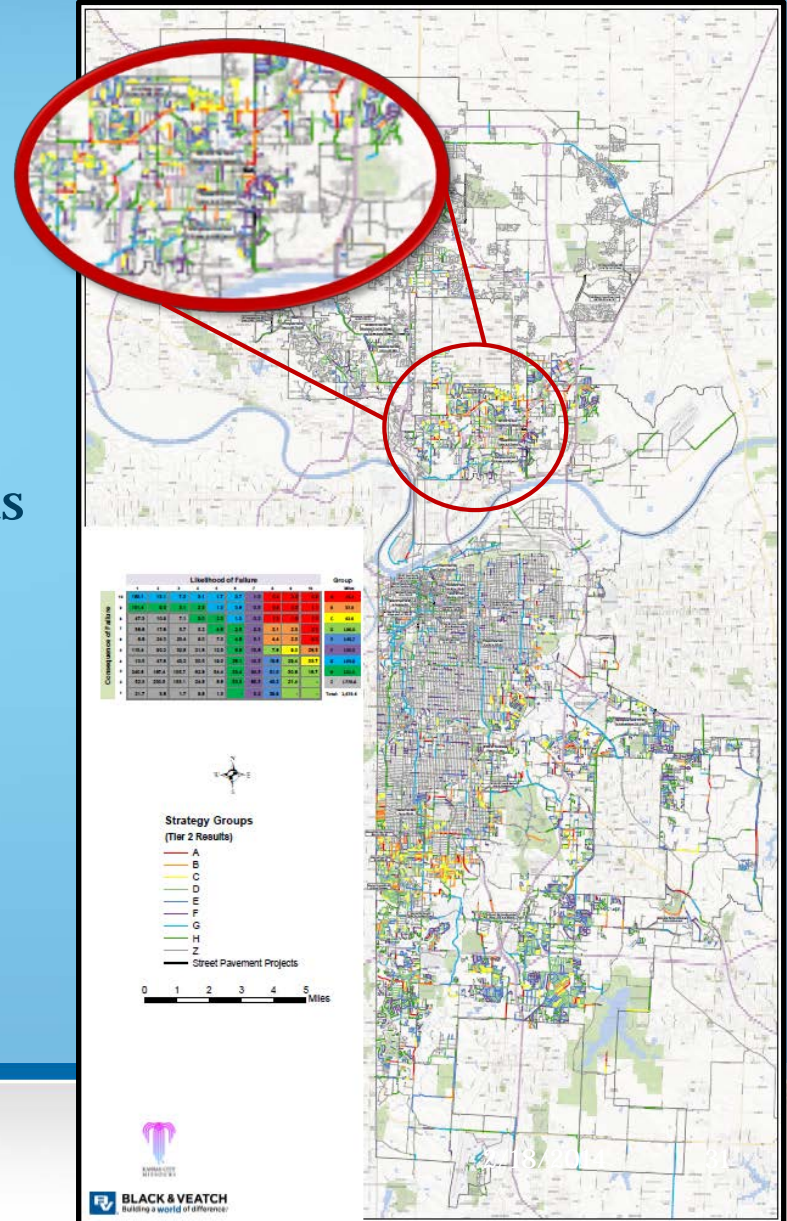
# Water Main Replacement Program

18 Design; 18 Construction Projects

Programmatic MBE/WBE/SLBE Goals

Programmatic DPS Selection Process

- 1 RFP/Q for 13 projects
- 1 RFP/Q for 5 SLBE-WSDEPS projects
- City-wide selection committee
- Proposal only, no interview
- All DPS Selections made at once



# Water Infrastructure: FY 15 Design

## **Water Main Replacement**

*Woodland to Kensington, 63<sup>rd</sup> St. to 72<sup>nd</sup> Terr.*

- \$450,000 | June 2014 | Distribution

## **Water Main Replacement**

*Walnut to Bennington, St. John to 17<sup>th</sup> St.*

- \$420,000 | June 2014 | Distribution

## **Water Main Replacement**

*Stateline to Holmes, 86<sup>th</sup> Terr. To 132<sup>nd</sup> Terr.*

- \$300,000 | June 2014 | Distribution

# Water Infrastructure: FY 15 Design

## **Water Main Replacement**

*Oakley to Marsh' 20<sup>th</sup> St. to 34<sup>th</sup> St.*

- \$280,000 | June 2014 | Distribution

## **Water Main Replacement**

*Stateline to Harrison, 44<sup>th</sup> St. To 75<sup>nd</sup> St.*

- \$280,000 | June 2014 | Distribution

## **Water Main Replacement**

*Stateline to Holmes, 75<sup>th</sup> St. to 85<sup>th</sup> St.*

- \$275,000 | June 2014 | Distribution

# Water Infrastructure: FY 15 Design

## **Water Main Replacement**

*NW Waukomis to N Troost, 40<sup>th</sup> St. to 83<sup>rd</sup> St.*

- \$260,000 | June 2014 | Distribution

## **Water Main Replacement**

*N Walrond to N Brighton, NE Russell Rd. to 53<sup>rd</sup> Terr.*

- \$250,000 | June 2014 | Distribution

## **Water Main Replacement**

*N Troost to N Kansas, NE Russell Rd to NE Englewood*

- \$210,000 | June 2014 | Distribution

# Water Infrastructure: FY 15 Design

## **Water Main Replacement**

*N Hardesty to N Tullis, 50<sup>th</sup> St. to 62<sup>nd</sup> St.*

- \$180,000 | June 2014 | Distribution

## **Water Main Replacement**

*N Richards to N Brighton, 1<sup>st</sup> St. to 37<sup>th</sup> St.*

- \$180,000 | June 2014 | Distribution

## **Water Main Replacement**

*Lydia to Walrond, 77<sup>th</sup> Terr. to 85<sup>th</sup> St.*

- \$165,000 | June 2014 | Distribution

# Water Infrastructure: FY 15 Design

## **Water Main Replacement**

*Holmes to College, 85<sup>th</sup> St. to 139<sup>th</sup> St.*

- \$160,000 | June 2014 | Distribution

## **Water Main Replacement**

*Holmes to Lydia, 79<sup>th</sup> St. to 85<sup>th</sup> St.*

- \$150,000 | June 2014 | Distribution

## **Water Main Replacement**

*Elmwood to Blue Ridge Cutoff, 47<sup>th</sup> St. to 57<sup>th</sup> St.*

- \$135,000 | June 2014 | Distribution

# Water Infrastructure: FY 15 Design

## **Water Main Replacement**

*Drury to Elm, 80<sup>th</sup> Terr. to 120<sup>th</sup> Terr.*

- \$130,000 | June 2014 | Distribution

## **Water Main Replacement**

*Blue Ridge Cutoff to Norfleet, 38<sup>th</sup> Terr. to 75<sup>th</sup> St.*

- \$115,000 | June 2014 | Distribution

## **Water Main Replacement**

*Askew to Hardesty, 36<sup>th</sup> St. to 46<sup>th</sup> St.*

- \$110,000 | June 2014 | Distribution

# Water Infrastructure: FY 15 Construction

## **Water Main Replacement**

*Hickman Mills to Bristol, 109<sup>th</sup> St. to 113<sup>th</sup> St.*

- \$1,750,000 | May 2014 | Distribution

## **Water Main Replacement**

*Stateline to Virginia, 99<sup>th</sup> St. to 112<sup>th</sup> St.*

- \$1,630,000 | May 2014 | Distribution

## **Water Main Replacement**

*St. Andrews to Holmes, 124<sup>th</sup> St. to 135<sup>th</sup> St.*

- \$1,590,000 | May 2014 | Distribution

# Water Infrastructure: FY 15 Construction

## **Water Main Replacement**

*Manchester to Ashland Ridge, 29<sup>th</sup> St. to 40 Hwy*

- \$1,340,000 | May 2014 | Distribution

## **Water Main Replacement**

*Oakley to Meadowbrook, 50<sup>th</sup> St. to 56<sup>th</sup> St.*

- \$930,000 | May 2014 | Distribution

## **Water Main Replacement**

*Eastern to Sycamore, 43<sup>rd</sup> St. to 51<sup>st</sup> St.*

- \$860,000 | May 2014 | Distribution

# Water Infrastructure: FY 15 Construction

## **Water Main Replacement**

*Eastern to Lee's Summit, 70<sup>th</sup> St. to Bannister*

- \$2,360,000 | June 2014 | Distribution

## **Water Main Replacement**

*Stateline to Kenwood, 75<sup>th</sup> St. to 89<sup>th</sup> St.*

- \$2,250,000 | June 2014 | Distribution

## **Water Main Replacement**

*Donnelly to Raytown, Ruskin to Highgrove*

- \$1,580,000 | June 2014 | Distribution

# Water Infrastructure: FY 15 Construction

## **Water Main Replacement**

*Jackson to Hardesty, 32<sup>nd</sup> St. to 45<sup>th</sup> St.*

- \$2,220,000 | July 2014 | Distribution

## **Water Main Replacement**

*Cambridge to Elm, 51<sup>st</sup> St. to 74<sup>th</sup> St.*

- \$1,530,000 | July 2014 | Distribution

## **Water Main Replacement**

*Jackson to Grandview, 104<sup>th</sup> St. to Martha Truman*

- \$670,000 | July 2014 | Distribution

# Water Infrastructure: FY 15 Construction

## **Water Main Replacement**

*McGee to Chestnut, 65<sup>th</sup> St. to 89<sup>th</sup> St.*

- \$4,020,000 | August 2014 | Distribution

## **Water Main Replacement**

*Oak to Mersington Ave, 39<sup>th</sup> Ter to NE Englewood Rd*

- \$3,850,000 | August 2014 | Distribution

## **Water Main Replacement**

*Jackson to N Brighton Ave., NE 42<sup>nd</sup> St. to Vivion*

- \$1,610,000 | August 2014 | Distribution

# Water Infrastructure: FY 15 Construction

## **Water Main Replacement**

*Roanoke to Troost, Missouri River to 51<sup>st</sup> St.*

- \$810,000 | August 2014 | Distribution

## **Water Main Replacement**

*Stateline to Rockhill, 64<sup>th</sup> Terr. to Romany*

- \$690,000 | August 2014 | Distribution

## **Water Main Replacement**

*Indiana to Cindy, 53<sup>rd</sup> St. to Meyer*

- \$690,000 | August 2014 | Distribution

# Water Infrastructure: FY 15 Construction

## **Arrowhead Phase III** *North Oak to Englewood*

- \$8,765,000 | September 2014 | Transmission



# Water Infrastructure: FY 15 Construction

## Shoal Creek Parkway Pump Station & Reservoir

- \$5,500,000 | April 2015 | Pump Station





FISCAL YEAR 2015

# Wastewater Infrastructure Design & Construction Projects

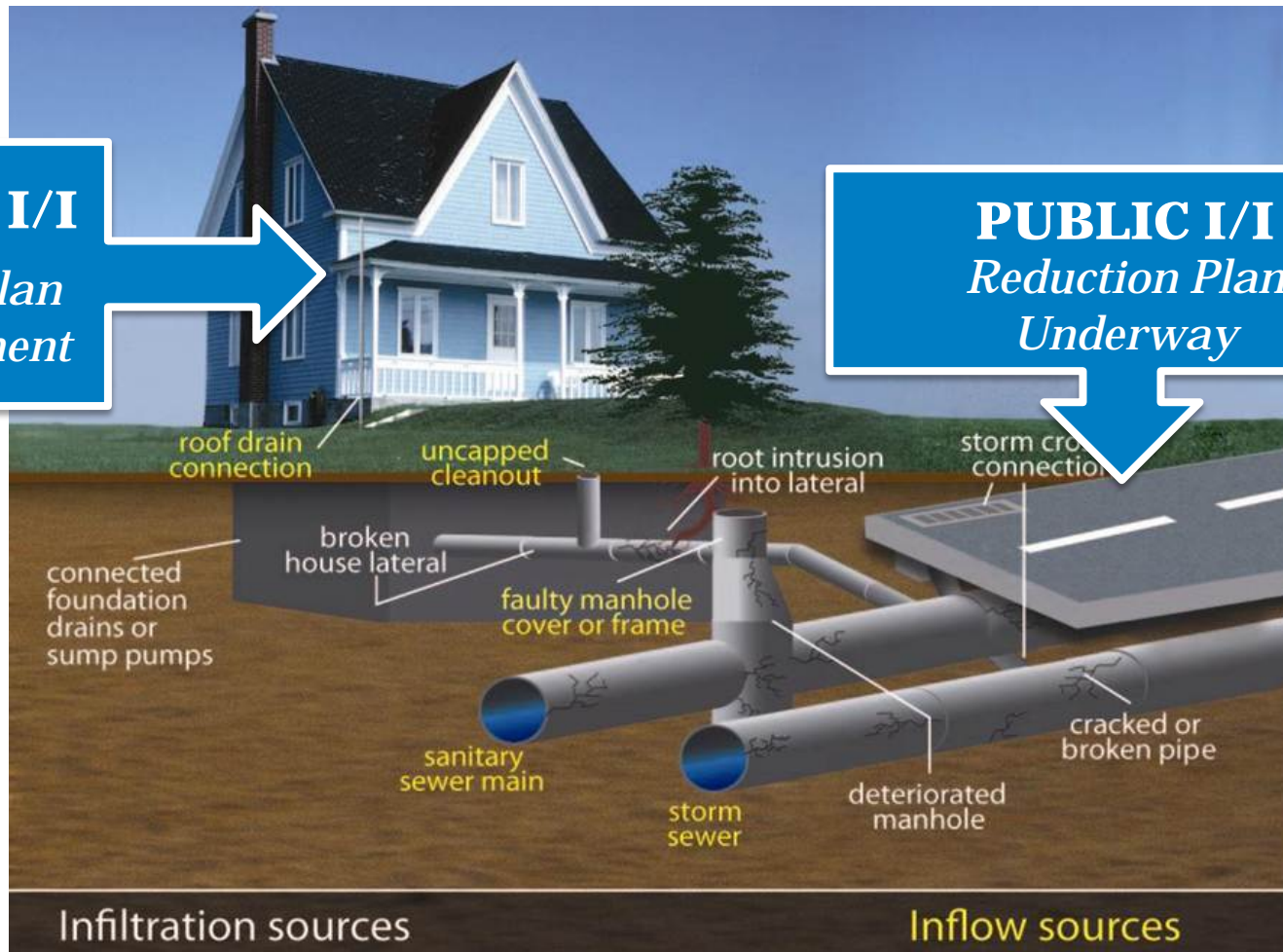
# Inflow/Infiltration Reduction

## PRIVATE I/I

*Reduction Plan  
in Development*

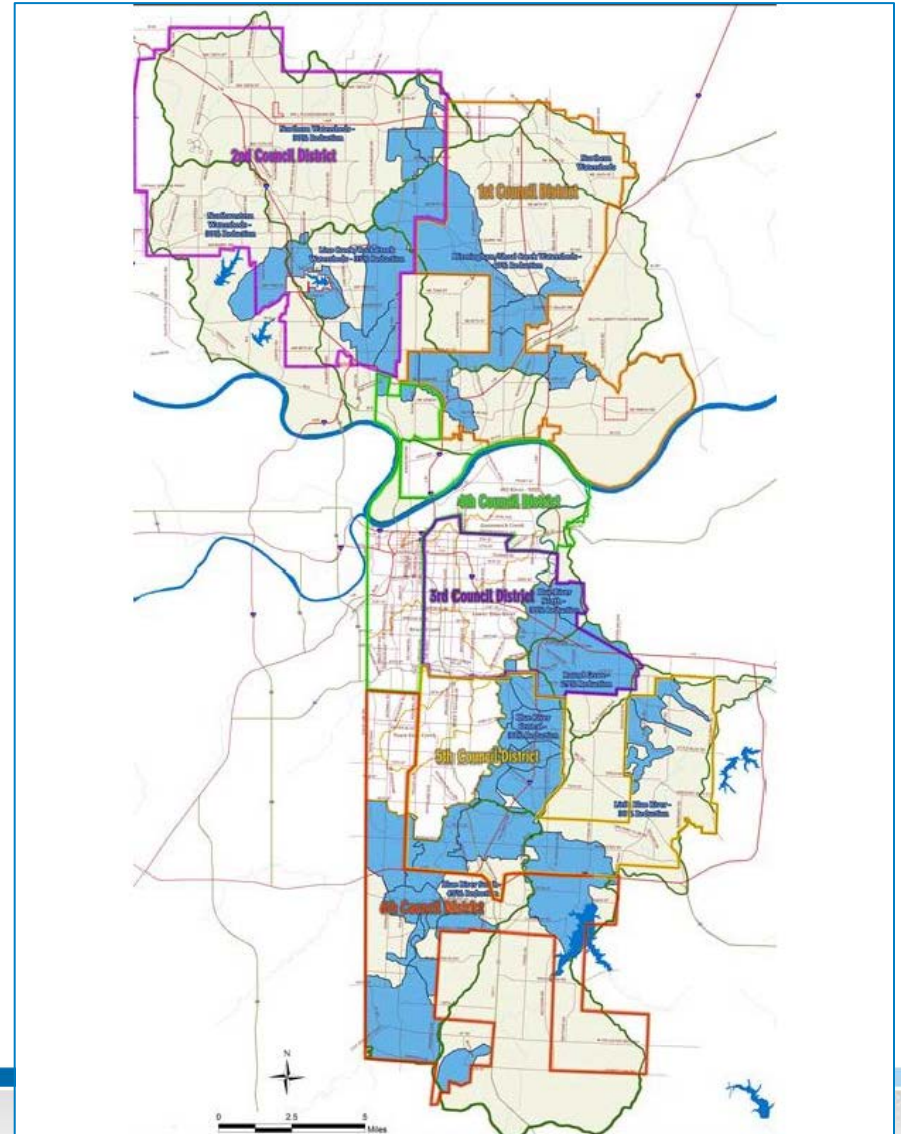
## PUBLIC I/I

*Reduction Plan  
Underway*



# I/I Reduction Project Locations

- 9 Basins
- Consent decree removal requirements: 29% to 45%
- Private I/I accounts for nearly 50% of removal
- Public and private I/I performed in parallel



# Wastewater Infrastructure: FY 15 Design

## **I/I Reduction:**

### *Blue River South Basin - Project Area 4*

- \$2,248,789 | January 2014 | OCP

## **I/I Reduction:**

### *Blue River Central Basin - Project Area 1*

- \$ 1,050,000 | January 2014 | OCP

## **I/I Reduction:**

### *Blue River Central Basin - Project Area 2*

- \$1,050,000 | January 2014 | OCP

# Wastewater Infrastructure: FY 15 Design

## **I/I Reduction:**

### *Line Creek/Rock Creek Basin - Project Area 2*

- \$1,390,455 | January 2014 | OCP

## **I/I Reduction:**

### *Blue River North Basin*

- \$841,601 | January 2014 | OCP

# Wastewater Infrastructure: FY 15 Design

## **Sewer Separation:** *Diversion Structure 006*

- \$746,291 | January 2014 | OCP

## **I/I Reduction:** *Blue River South Basin - Project Area 5*

- \$722,064 | January 2014 | OCP

## **I/I Reduction:** *Blue River South Basin - Project Area 3*

- \$666,281 | January 2014 | OCP

# Wastewater Infrastructure: FY 15 Design

## **Buckeye Pump Station Improvements**

- \$1,600,000 | February 2014 | Pump Station

## **Sewer Pipe Consolidation: Outfall 063**

- \$873,970 | February 2014 | OCP

## **High Efficiency Aeration - Westside**

- \$400,000 | February 2014 | Treatment

# Wastewater Infrastructure: FY 15 Design

## **High Efficiency Aeration - Birmingham**

- \$400,000 | February 2014 | Treatment

## **Platte Woods Pump Station Rehab**

- \$300,000 | February 2014 | Pump Station

# Wastewater Infrastructure: FY 15 Design

## **Neighborhood Sewer Rehabilitation** *Brush Creek - Project Area 1*

- \$2,805,000 | March 2014 | OCP

## **Neighborhood Sewer Rehabilitation:** *Brush Creek - Project Area 2*

- \$2,805,000 | March 2014 | OCP



# Wastewater Infrastructure: FY 15 Design

## **Sewer Separation Outfall 067**

- \$3,607,375 | April 2014 | OCP

## **Gooseneck Arch Sewer Inline Gate & Pump Station**

- \$1,476,398 | April 2014 | OCP

## **Sewer Separation: Diversion Structure 099**

- \$636,596 | May 2014 | OCP

# Wastewater Infrastructure: FY 15 Construction

## **Swope Campus Parking Lot & Sustainable Stormwater Improvement Project**

- \$3,100,000 | February 25, 2014 | Facilities

## **Blue River WWTP Clarifier Work**

- \$ 3,800,000 | March 2014 | Treatment



# Wastewater Infrastructure: FY 15 Construction

## Sludge Holding Lagoons Birmingham

- \$1,500,000 | April 2014 | Treatment



# Wastewater Infrastructure: FY 15 Construction

## City Wide Sewer Rehabilitation

- \$4,500,000 | May 2014 | Collection

## Weatherby Lake Sewer Rehabilitation

- \$2,000,000 | June 2014 | Collection

## Manhole Rehabilitation Citywide

- \$3,000,000 | August 2014 | Collection

# Wastewater Infrastructure: FY 15 Construction

## Birmingham Pump Station Improvements

- \$900,000 | January 2015 | Pump Station





FISCAL YEAR 2015

# Stormwater Infrastructure Projects

# Stormwater: FY 15 Construction

## **Blue River Trail**

### *Brush Creek to Stadium Drive*

- \$1,500,000 | May 2014 | Waterways

## **Blue River Trail**

### *Swope Park to Brush Creek*

- \$1,200,000 | May 2014 | Waterways

## **Storm Drainage Improvements**

### *6400 NE 52<sup>nd</sup>*

- \$100,000 | June 2014 | Stormwater

# Stormwater: FY 15 Construction

## **Loma Vista & Eastern Culverts & Channel** *Eastern to Sante Fe*

- \$800,000 | August 2014 | Stormwater

## **57<sup>th</sup> & Norfleet Storm Drainage Phase II**

- \$657,000 | August 2014 | Stormwater

## **Stormwater Detention Improvements** *NE Cookingham Drive – Lakeside Drainage*

- \$373,246 | October 2014 | Stormwater

## **Dean Lane Bank Stabilization Phase II**

- \$165,000 | October 2014 | Stormwater

# Stormwater: FY 15 Construction

## **40<sup>th</sup> & Monroe Phase II Improvements**

- \$205,000 | January 2015 | Stormwater

## **Gardner West Detention Basin**

- \$576,314 | February 2015 | Stormwater

# U.S. Army Corps of Engineers

## **Turkey Creek Restored Channel Phase III**

- \$8,500,000 | March 2014 | Construction

## **Blue River Channel** *Maintenance Access & Channel Repair*

- \$3,500,000 | June 2014 | Construction

## **Upper Blue River Industrial** *Utility Relocations & Levee Work*

- \$2,000,000 | July 2014 | Construction

# U.S. Army Corps of Engineers

## **Turkey Creek MO River Interceptors**

- \$13,000,000 | September 2014 | Construction

## **East Bottoms Levee Unity Improvements**

- \$3,500,000 | September 2014 | Construction

## **Swope Park Industrial**

- \$2,000,000 | Corps Contract | Design

# U.S. Army Corps of Engineers Projects:



[www.fbo.gov](http://www.fbo.gov)

**US Army Corps  
of Engineers.**

## **Society of American Military Engineers One-on-One Opportunity:**



April 2, 2014  
601 E. 12<sup>th</sup> Street  
[www.samekc.org](http://www.samekc.org)



**BLACK & VEATCH**  
Building a **world** of difference.®

**Burns &  
McDonnell**

SINCE 1898

# Thank you.



**ACEC**  
*Missouri*



Minority & Women  
COALITION



Minority Contractors Association  
of Greater Kansas City  
**MCA**

**KCSBAE**  
Kansas City Society of  
Black Architects and Engineers



# Please Join us.



**BLACK & VEATCH**  
Building a **world** of difference.®

*Networking Reception in the Lobby.*