

WELCOME

TUESDAY, MAY 23, 2023



PROJECT GOALS

The primary goal of the Master Plan is to create a comprehensive plan for managing the parkland along the Lower Brush Creek corridor. This will be accomplished by:

SOLICITING PUBLIC INPUT

Workshop participants will have the opportunity to provide input on potential future recreational, cultural and environmental features.

ENGAGING PARTNERS

Community partners help identify benefits for flood risk management, ecosystem restoration, and enhanced recreation and cultural opportunities.

DEVELOPING A VISION FOR THE CORRIDOR

Your input is needed to help establish a long-range vision for sustainable improvements to improve the quality of life and beneficial use of this corridor.



SCHEDULE

The Lower Brush Creek Master Plan involves four stakeholder and public workshops.

WORKSHOP 1 – APRIL 2023

Introduction of the master planning process

WORKSHOP 2 – MAY 2023

Collection of public ideas and feedback on Master Plan features.

WORKSHOP 3 – JULY 2023

Presentation of potential Master Plan components.

WORKSHOP 4 – AUGUST 2023

Refinement and completion of Master Plan components.

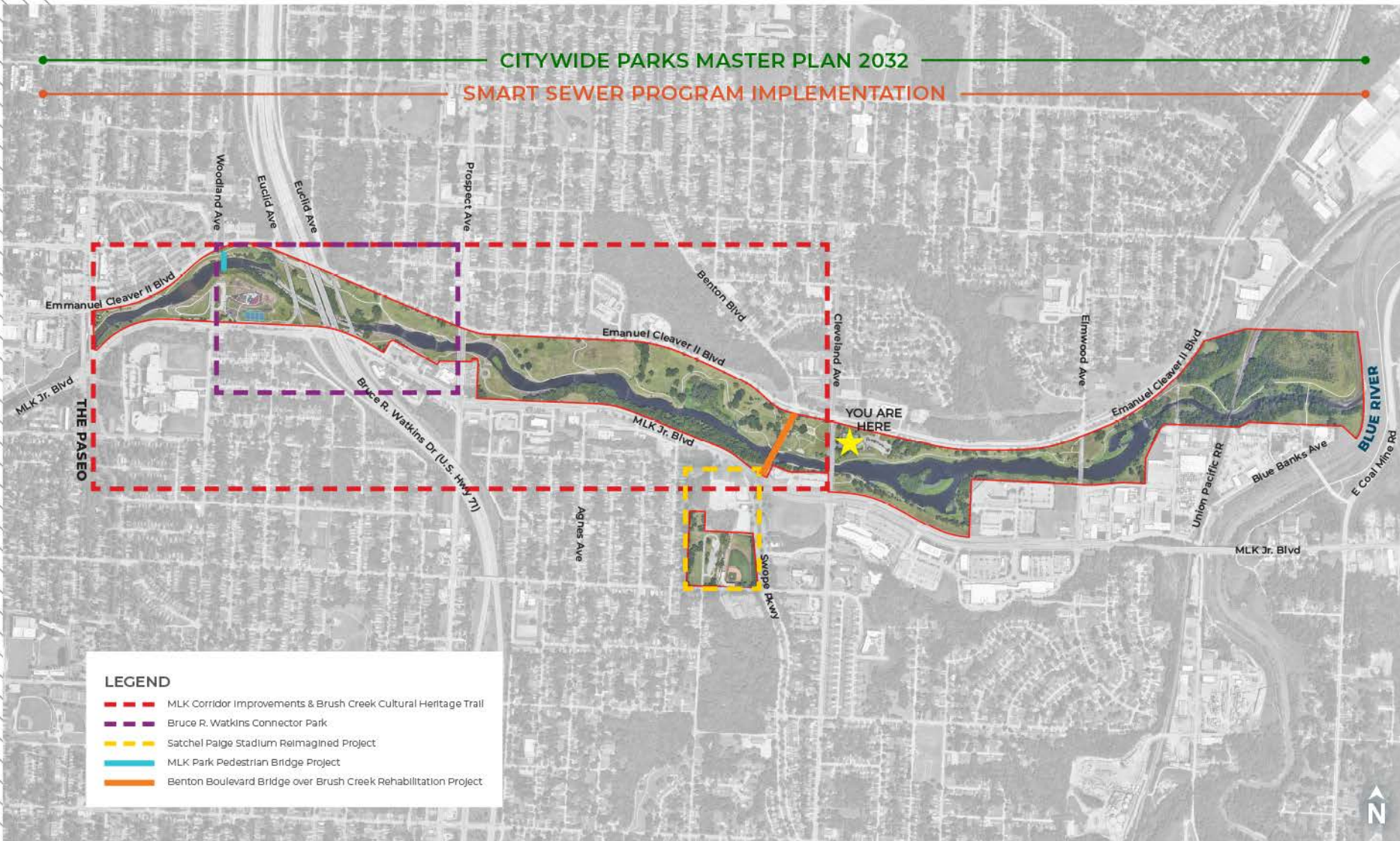
CONCLUSION

At the conclusion of the fourth workshop, the project team will finalize the workshop findings and incorporate them into the Master Plan.



CITYWIDE PARKS MASTER PLAN 2032

SMART SEWER PROGRAM IMPLEMENTATION



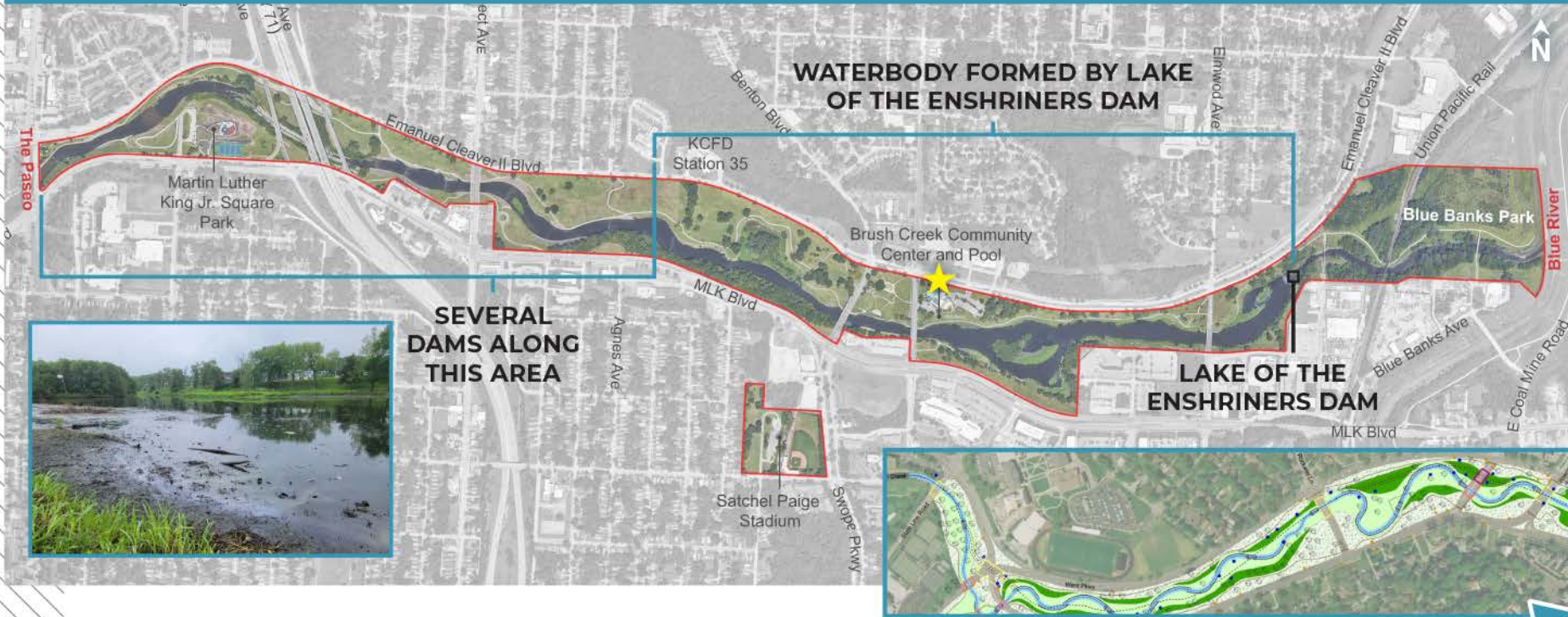
LOWER BRUSH CREEK MASTER PLAN, THE PASEO TO BLUE RIVER

INVENTORY - CONCURRENT PROJECTS



LOWER BRUSH CREEK MASTER PLAN, THE PASEO TO BLUE RIVER

LOWER BRUSH CREEK ISSUES & CONCERNS



There are several dams located along the project area that contribute to:

- Trapped sediment, debris, and trash.
- Stagnant conditions, water quality concerns, and periodic fish kills.
- Significant and costly dredging.
- Ongoing maintenance.

Please place a dot by the potential improvement option you prefer:

- 1** Remove the dams, dispose of sediments, and change the water bodies into a free-flowing creek with native plantings and stream buffers.
- 2** Dredge these areas, dispose of sediments, and pursue additional funding for ongoing maintenance of Lower Brush Creek water bodies and dams.



PRIORITIES

Please place a sticker on 3 priorities that are most important to you.

Increase active recreational opportunities such as sports fields, courts, or playgrounds.

Increase passive recreational opportunities such as walking paths and picnic areas.

Increase cultural/community amenities such as community gardens, public art, and amphitheaters.

Improve park access through increased crosswalk connections to neighborhoods and/or parking.

Improve safety and security within the park.

Improve Brush Creek water quality by addressing issues such as trash, odor, and sedimentation.

Improve wildlife habitat within the park.

CULTURAL AND EDUCATIONAL



OUTDOOR CLASSROOMS

SIGNAGE



PUBLIC ART

FARMER'S MARKET



SEATING AND OVERLOOKS

MEMORIALS



COMMUNITY GARDENS

PARK PROGRAM OPTIONS

ECOLOGICAL



RAIN GARDENS

ECOSYSTEM RESTORATION



RECREATIONAL



SKATE PARKS

COURT SPORTS



FIELD SPORTS

FITNESS OBSTACLE COURSE



PLAYGROUNDS

PARK PROGRAM OPTIONS RECREATIONAL

PICNIC AREAS



MULTI-USE LAWN



DOG PARKS



MULTI-USE TRAILS



SMALL-SCALE RECREATION



SPLASH PADS



AMPHITHEATERS



**THANK YOU
FOR COMING**

