



Water Main Replacement

WMR in the Area of SW Blvd to Main Street / 43rd Street
to Pershing Avenue- Transmission Mains Phase I



Project Team



Jeff Martin, PE Chief Engineering Officer

Mike Akins

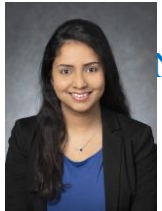
SheDigs It
Mike@SheDigsIt.com
816-295-1100



Melanie Jollett, PE Water Distribution
Division Head

Patrick Lewis

KC Water Inspector
Patrick.Lewis@kcmo.org
816-213-1443



Nimesha Senanayake, PE KC Water Project Manager
Nimesha.Senanayake@kcmo.org
816-513-0460

THREE UTILITIES



Water



Wastewater



Stormwater

ASSETS



1 Water Treatment Plant
18 Pump Stations
2,800 Miles of Water Main
35,000 Valves
23,000 Fire Hydrants



6 Wastewater Treatment Plants
39 Pump Stations
2,800 Miles of Sewer Main
67,000 Manholes



630 Miles of Storm Sewer
53,000 Storm Inlets
15 Stormwater Pump Stations
13.5 Miles of Levee

OUR WATER SOURCE



Water Main Replacement Program

- KC Water distribution system includes ~2,800 miles of water mains.
- Some water mains date back to the 1800s.
- Aging infrastructure is a nationwide challenge.
- KC Water WMR Program is to replace **1% per year, or 28 miles**, each year.
- The WMR Program is in its 9th year, and we've replaced more than **240miles** to date.

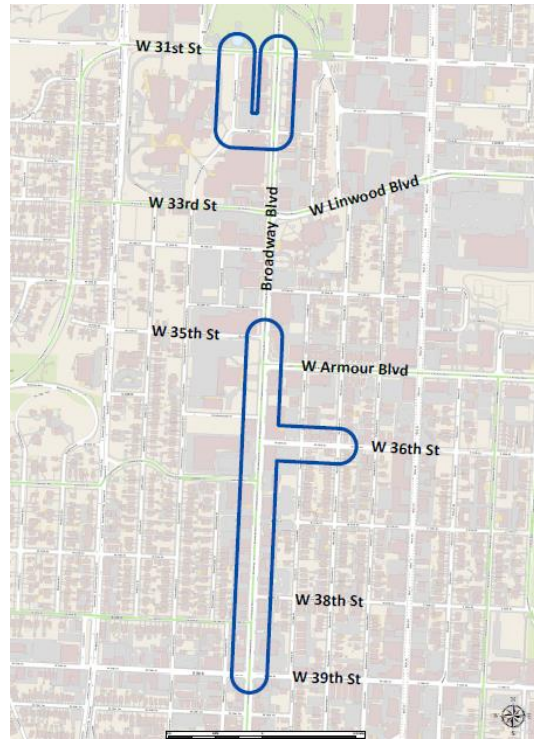


Data-Driven Priorities

- Evaluation of water main condition
- Risk of water mains is determined based on:
 - Likelihood of Failure
 - Consequence of Failure
- WMR Projects are developed and designed; new mains are zinc coated ductile iron wrapped in a polyethylene sleeve.
- This long-term infrastructure plan will reduce service interruptions due to **breaks**, reduce **costs**, and increase **capacity and fire protection**.
- Since WMR Program began in 2014 – KC Water has seen a reduction in main breaks of 50%.



Upgrading Your Water Mains



- Replace Pennsylvania and W 32nd Street between W 31st Street and Broadway Boulevard, and
- Extend Pennsylvania Avenue South of W 32nd Street, and
- Extend W. 31st Street between Pennsylvania Avenue and Broadway Boulevard, and
- Replace Broadway Boulevard between W 31st Street and W 32nd Street, and
- Replace Broadway Boulevard between W 35th Street and W 39th Street, and
- Replace W. 36th Street between Broadway Boulevard and Wyandotte Street,

Replacing 10,066 LF of 6-inch- 24-inch CIP water mains

What To Expect

Setup:

- Material delivered to jobsite and traffic control plan implemented.
- Saw cut pavement, utilities marked, and various locations potholed to verify location and elevations.



What To Expect

Construction:

- Excavate narrow trench to install new water main along project limits.
Water service will be interrupted, but you will be notified prior to any scheduled outages
- Excavate to construct temporary connection; test and disinfect the new water main.

Testing may take a week or more; you'll see little activity during this time



What To Expect

Construction:

- With both new and old water mains in service, transfer customer service lines to the new pipe.
If your meter is inside, we'll remove it and install a new one in your yard
- Construct Permanent connection and abandon the old water main.



What To Expect

Restoration:

- Affected curbs, driveways, and other pavement will be restored per KCMO Public Works Department Standards.
- Disturbed established lawn areas will be restored after work is completed and as the season permits.

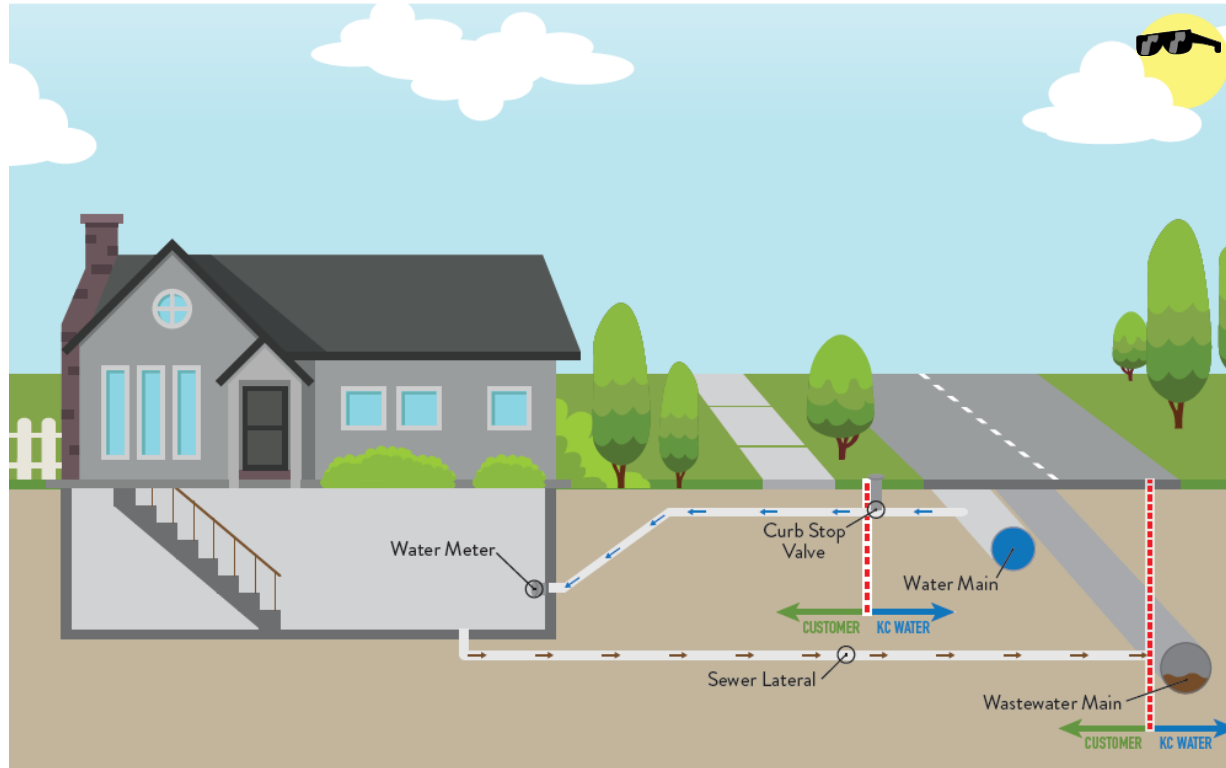


What To Expect

Keep In Mind:

- Large equipment will be in use, creating noise and dusty conditions.
- Ordinary travel routes may be temporarily restricted.
- The new water main will reduce the chance of a water main break in the future.
- The new water main will enhance fire protection and service within the neighborhood





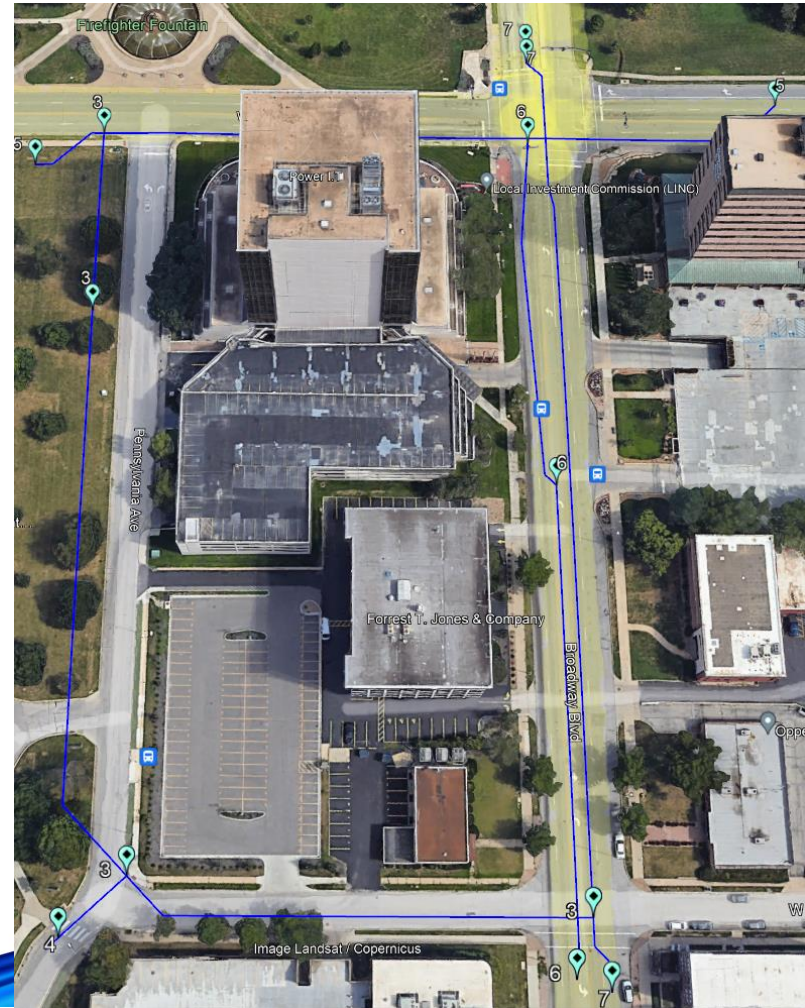
Schedule and Logistics

- Notice to Proceed will be issued in May 2023.
- Work to be completed by February 2024.
- Contractor will provide written notice to impacted customers prior to construction.
- CMT will have Lynchpin Ideas on their team to assist with public outreach and coordinate weekly progress meetings onsite.
- For more information:
 - Postcard with this project
 - www.kcwater.us/projects/current-projects - find this project for an information sheet and a link to this recording

Schedule and Logistics Cont.

- Broadway/Pennsylvania Loop from 31st Street to 32nd Street

- Line 5 starting 2nd week in May
- Lines 3 & 4 in June
- Lines 6 and 7 in July



Schedule and Logistics Cont.

TRAFFIC CONTROL PLAN - DRAFT

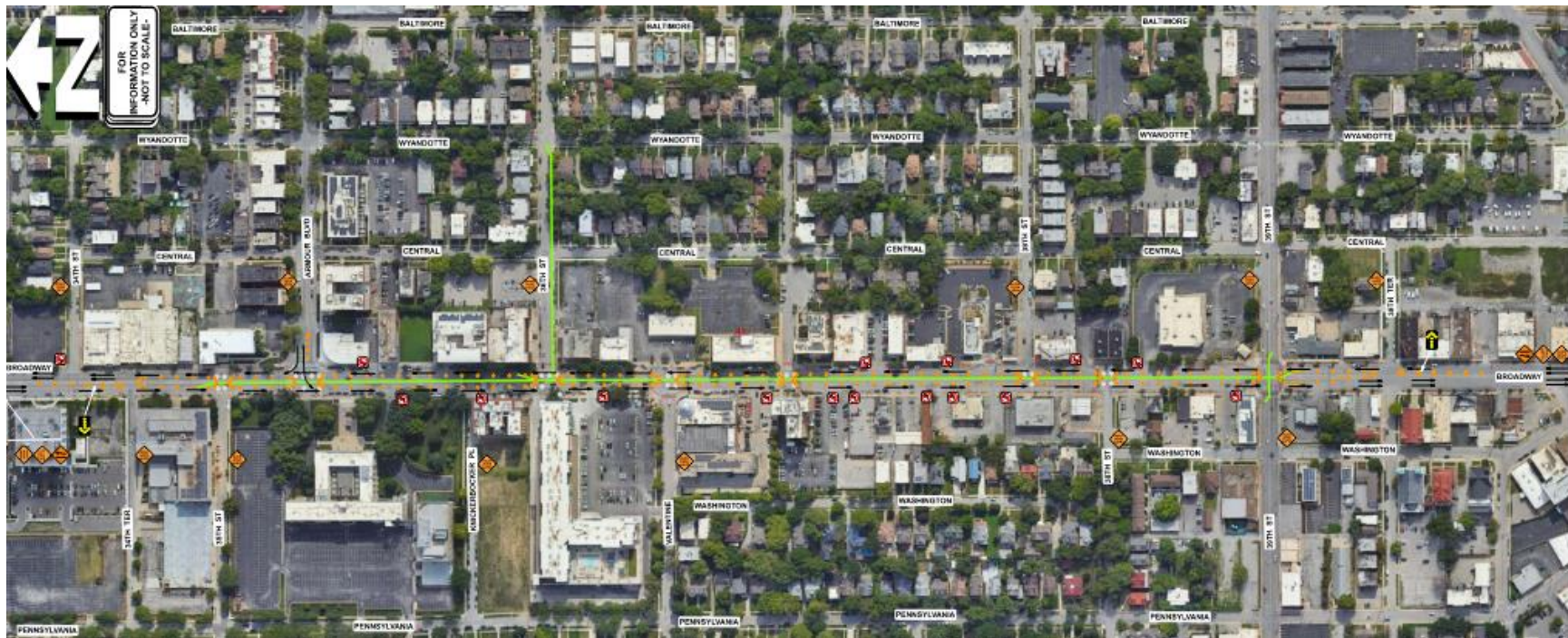


Schedule and Logistics Cont.

- BROADWAY BOULEVARD INTERRUPTIONS 35TH TO 39TH STREET
 - 35TH Street construction will begin by the 2nd week of May (5/15)
 - Watermain work will proceed South to 39th St. for the remainder of the project (January 2024)
 - Traffic control will be set up to 1 lane Northbound and 1 lane Southbound
 - Turning across Broadway BLVD into businesses, apartment complexes, etc. will be prohibited other than at major intersections

Schedule and Logistics Cont.

BROADWAY BOULEVARD TRAFFIC CONTROL PLAN - DRAFT





Thank You!

For More Information:

www.kcwater.us/projects/current-projects - find this project for an information sheet

