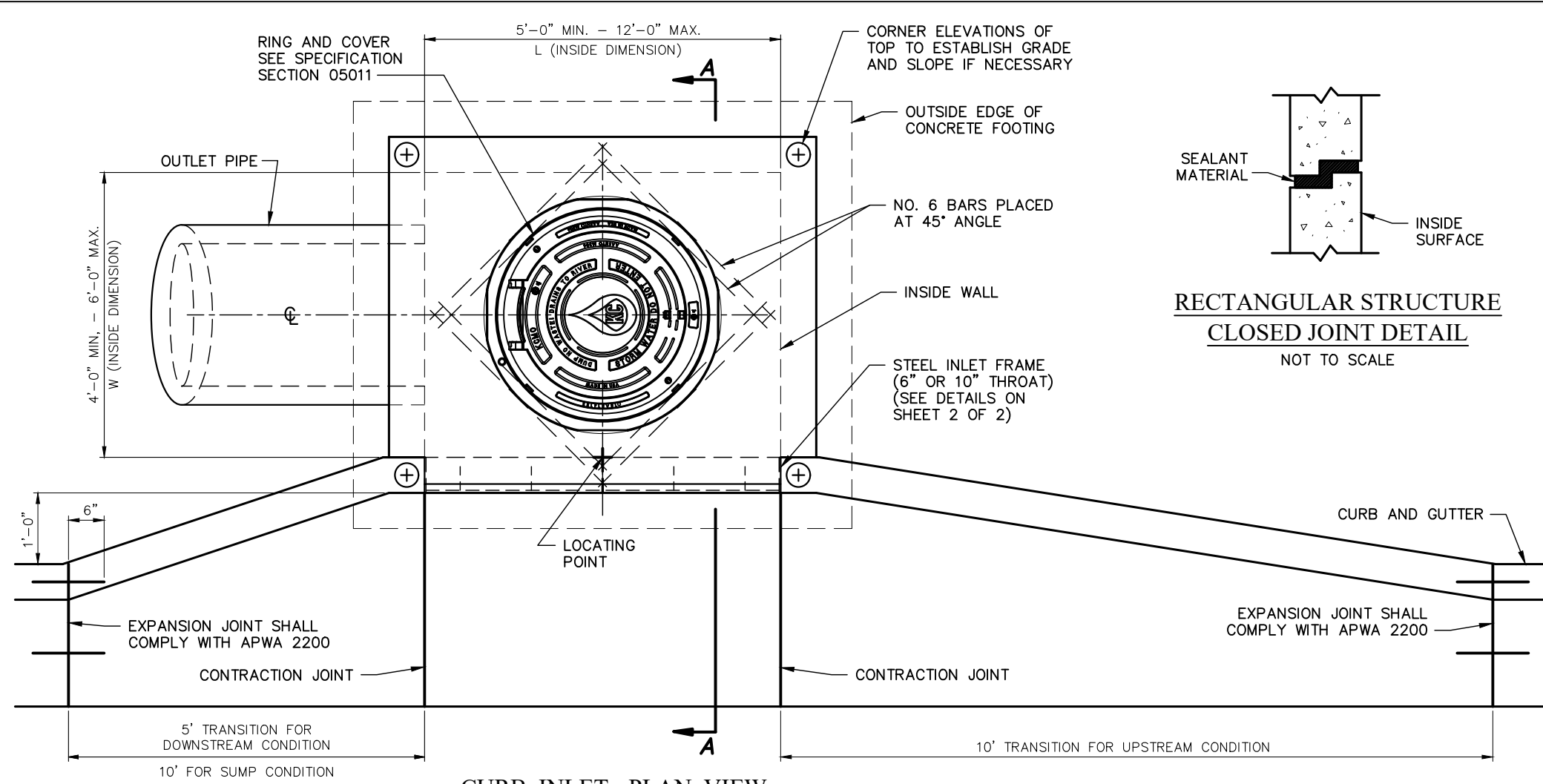
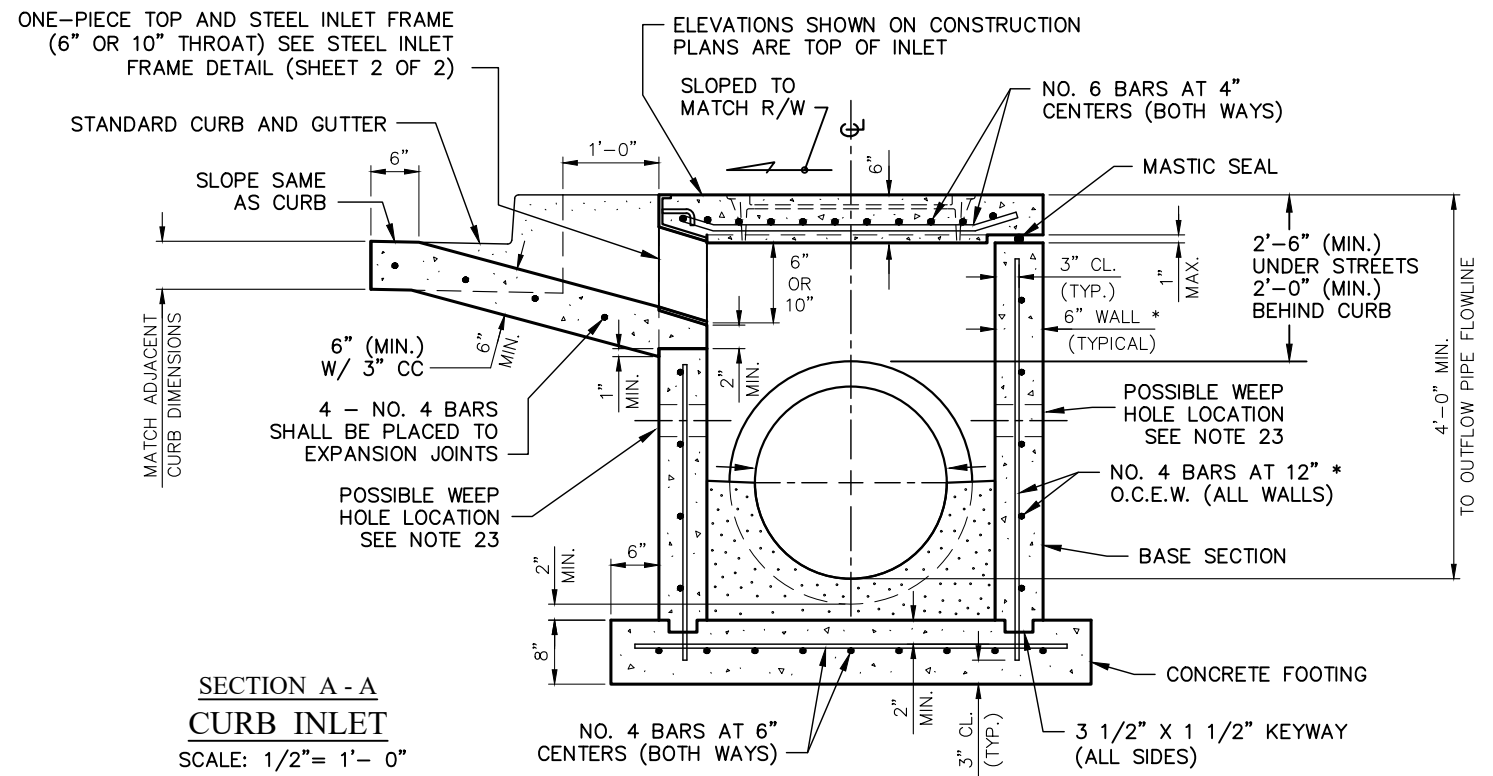


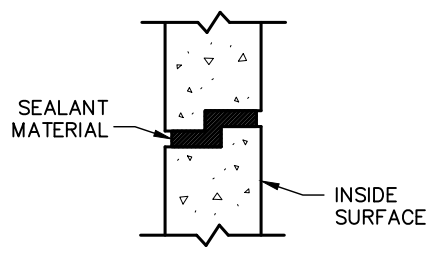
14 September 2022 NOCHROME.CTB 1:1 KIPPER, BRIAN P:\DESIGN DRAFTING\KCMO\STANDARD & SPEC DRAWINGS\STORMWATER\STORMINLET-GRATEDetails\CI-3.DWG



**CURB INLET - PLAN VIEW**  
SCALE: 1/2" = 1'- 0"



**SECTION A - A**  
**CURB INLET**  
SCALE: 1/2" = 1'- 0"



**RECTANGULAR STRUCTURE**  
**CLOSED JOINT DETAIL**  
NOT TO SCALE

**NOTES:**

1. ALL WORK SHALL MEET THE REQUIREMENTS OF APWA-KCMO 2600 AS MODIFIED HEREIN.
2. CURB INLET TYPE 3, CI-3, SHALL BE USED WHEN CI-1 AND CI-2 ARE NOT ALLOWED.
3. INLETS SHALL BE SET LEVEL. PROVIDE CORNER ELEVATIONS TO ESTABLISH GRADE AND SLOPE.
4. THE FIRST DIMENSION LISTED IN THE CONSTRUCTION NOTES IS THE "L" DIMENSION. THE SECOND DIMENSION IS THE "W" DIMENSION.
5. LOCATE RING AND COVER CENTERED OVER OUTLET PIPE WHEN REQUIRED. LOCATE RING AND COVER AT EACH END WHEN INLET IS OVER 11 FEET IN LENGTH.
6. BEVEL ALL EXPOSED EDGES WITH 3/4" CHAMFER OR 1/2" TOOLED EDGE.
7. STORM SEWER STRUCTURES MAY BE POURED IN PLACE AS APPROVED BY WATER SERVICES. MIX A511 - 3/4 - 2 SHALL BE USED.
8. BOXOUTS SHALL NOT PROJECT THROUGH THE STRUCTURE CORNERS. REINFORCING SHALL BE BENT AROUND PIPE OPENINGS WHEN POSSIBLE. WHEN REINFORCING IS CUT, # 4 DIAGONAL BARS SHALL BE USED TO TIE ALL CUT ENDS TOGETHER.
9. FLOOR OF INLET SHALL BE SHAPED WITH INVERT TO PROVIDE SMOOTH FLOW. MIX NON-SHRINK GROUT ASTM C1107, GRADES B AND C, 4,000 PSI IN 24 HOURS SHALL BE USED.
10. REINFORCING STEEL SHALL BE NEW BILLET, MINIMUM GRADE 40 AS PER ASTM A615, AND SHALL BE BENT COLD. WELDING OF REINFORCING STEEL WILL NOT BE PERMITTED.
11. ALL DIMENSIONS RELATIVE TO REINFORCING STEEL ARE TO CENTERLINE OF BARS. 2" CLEARANCE SHALL BE PROVIDED THROUGHOUT UNLESS NOTED OTHERWISE. TOLERANCE OF +/- 1/8" SHALL BE PERMITTED.
12. ALL LAP SPLICES NOT SHOWN SHALL BE A MINIMUM OF 40 BAR DIAMETERS IN LENGTH.
13. ALL CURB INLET TOPS ARE TO INCLUDE STEEL INLET AND FRAME AND ARE TO BE CONSTRUCTED AFTER FINAL CURB LINE HAS BEEN APPROVED BY THE CITY AND PRIOR TO CURB CONSTRUCTION.
14. PIPE CONNECTIONS TO PRECAST STRUCTURES SHALL HAVE A MINIMUM OF 6" OF CONCRETE AROUND THE ENTIRE PIPE WITHIN 2 FEET OF THE STRUCTURE, UNLESS SEALED WITH APPROVED FLEXIBLE WATERPROOF GASKETS IN PRECAST OPENINGS. MINIMUM CLEARANCE BETWEEN PIPE BOXOUTS AND BARREL JOINTS IS 8 1/4" WITHOUT SPECIAL DESIGN.
15. BACKFILL AROUND STRUCTURES SHALL BE CLASS II GRANULAR BACKFILL MATERIAL CONFORMING TO ASTM D2321 AND 24" THICK AROUND STRUCTURE.
16. THE STRUCTURE ELEVATION SHOWN ON THE PLANS IS THE TOP SURFACE OVER THE LOCATING POINT.
17. ALL SURFACES CONTACTING SIDE AND BACK OF INLET SHALL MATCH AT TOP EDGE OF LID AT EACH CORNER.
18. FOR DEPTH GREATER THAN 7 FEET AND LESS THAN 10 FEET:  
A. WALLS SHALL BE 8" THICK WITH # 5 VERTICAL BARS AT 5" O.C. AND # 5 HORIZONTAL BARS AT 9" O.C.  
B. BASE SHALL BE 12" THICK WITH # 5 BARS EWTB AT 6" O.C.
19. MASTIC WILL PROVIDE WATER SEAL BETWEEN TOP AND WALL AND BETWEEN JOINTS.
20. ALL CONCRETE SHALL BE 4,000 PSI MINIMUM.
21. THE DESIGN PROFESSIONAL (DP)/ ENGINEER OF RECORD (EOR) FOR THE PROJECT SHALL EVALUATE STRUCTURE FOR WITHSTANDING PRESSURE AND BUOYANCY IN AREAS WITH POTENTIAL FOR HIGH GROUND WATER AND RECOMMEND CHANGES ACCORDINGLY. BASE EXTENSIONS SHALL BE PROVIDED WHEN SPECIFIED BY THE DP/ EOR FOR THE PROJECT.
22. A 1/2" JOINT FILLER SHALL BE PLACED BETWEEN ADJOINING CONCRETE SURFACES AND INLET.
23. INLETS IN SUMP CONDITION OR PER DP/ EOR RECOMMENDATION SHALL HAVE A MINIMUM OF ONE 4" DRAIN OPENING LOCATED A MINIMUM OF 6" BELOW THROAT. LOCATION OF DRAIN(S) TO BE DETERMINED BY DP/ EOR. 4" DRAIN OPENING(S) SHALL BE COVERED WITH AN APPROVED 1/4" GALVANIZED SCREEN AND FILTER FABRIC PRIOR TO PLACEMENT OF 3/8" CLEAN ROCK, A MINIMUM OF 15" IN ALL DIRECTIONS.

\* FOR WALLS GREATER THAN 8 FEET LONG, INCREASE WALL THICKNESS TO 7" AND REDUCE VERTICAL BAR SPACING TO 6" CENTERS.

DO NOT SCALE THESE DRAWINGS FOR DIMENSIONS OR CLEARANCES. ANY QUESTIONS REGARDING DIMENSIONS SHALL BE BROUGHT TO THE ATTENTION OF THE CITY PRIOR TO CONSTRUCTION.

NO.	DATE	BY	NATURE
REVISIONS			

**CURB INLET**  
**HEAVY DUTY - TYPE DETAILS**

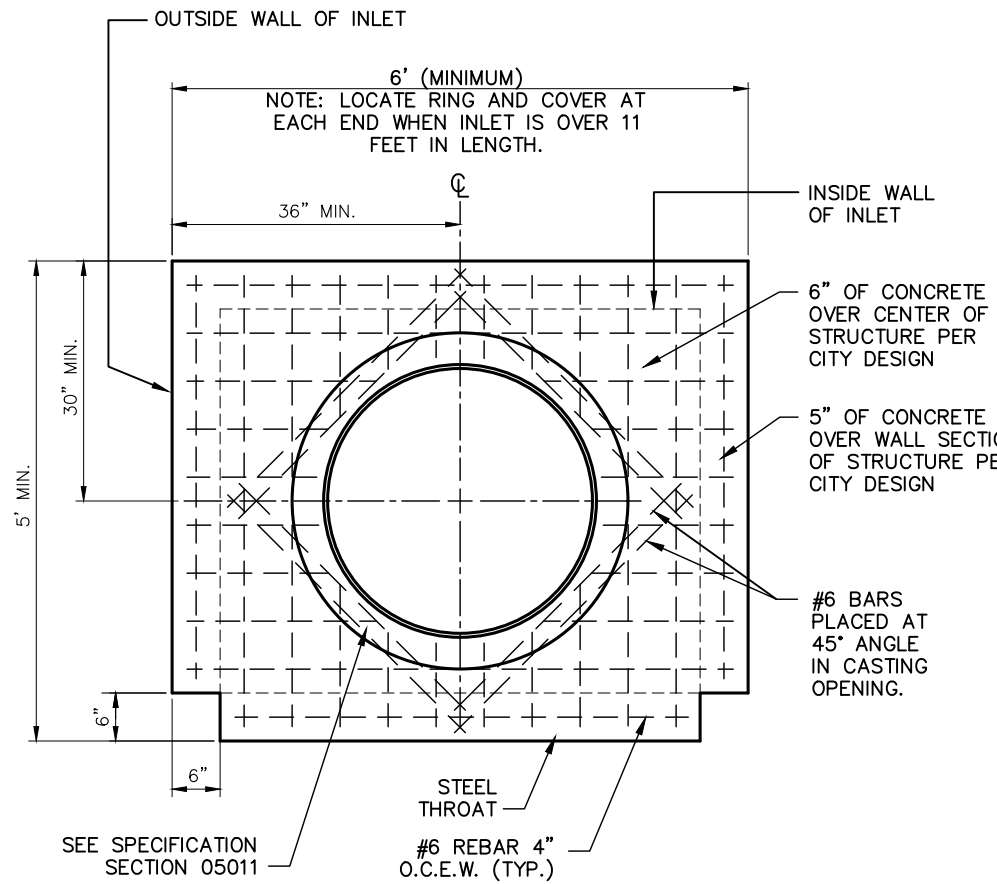
WATER SERVICES  
CITY OF KANSAS CITY, MISSOURI

DRAWING NO. **CI-3**

DEVELOPED BY: STORMWATER STANDARDS      APPROVED BY: \_\_\_\_\_

DATE: 9/14/2021

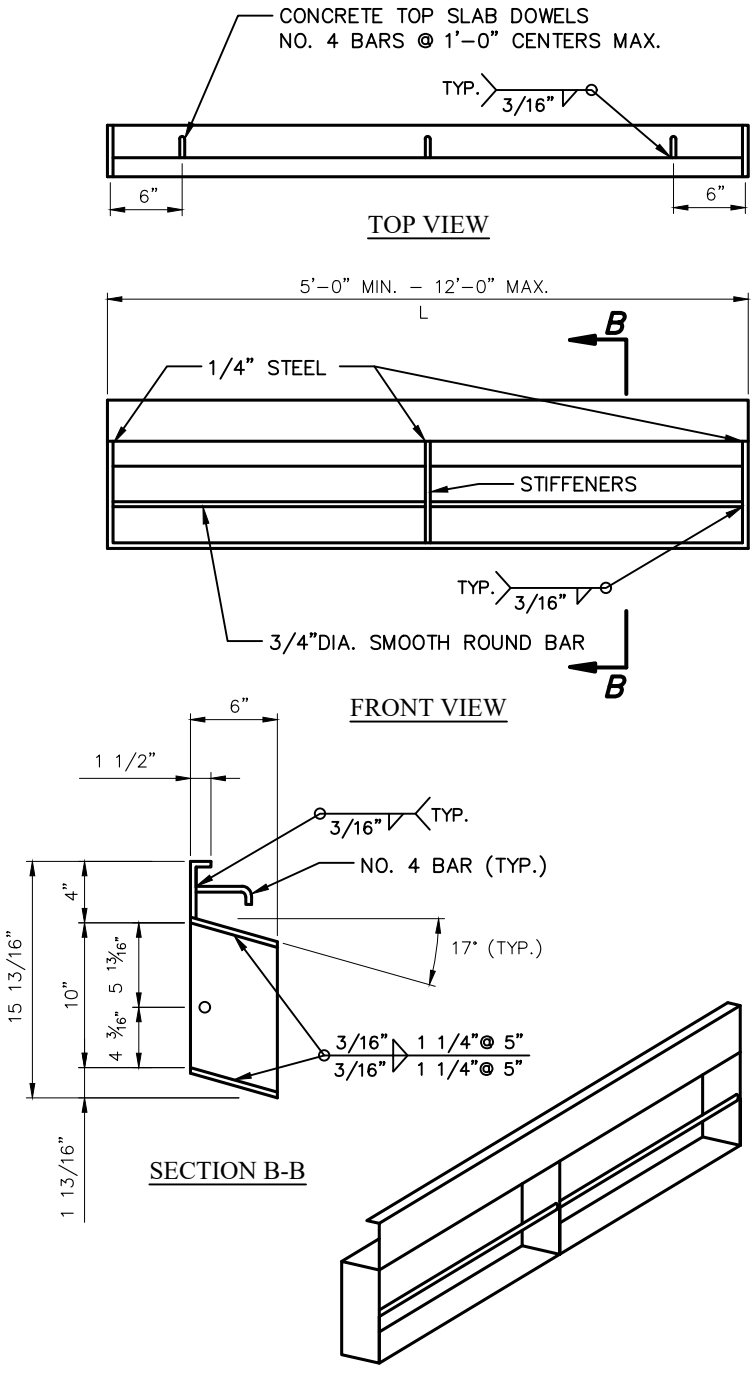
14 September 2022 NOCHROME.CTB 1:1 KIPPER, BRIAN P:\DESIGN DRAFTING\KCMO\STANDARD & SPEC DRAWINGS\STORMWATER\STORMINLET-GRATEDetails\CI-3.DWG



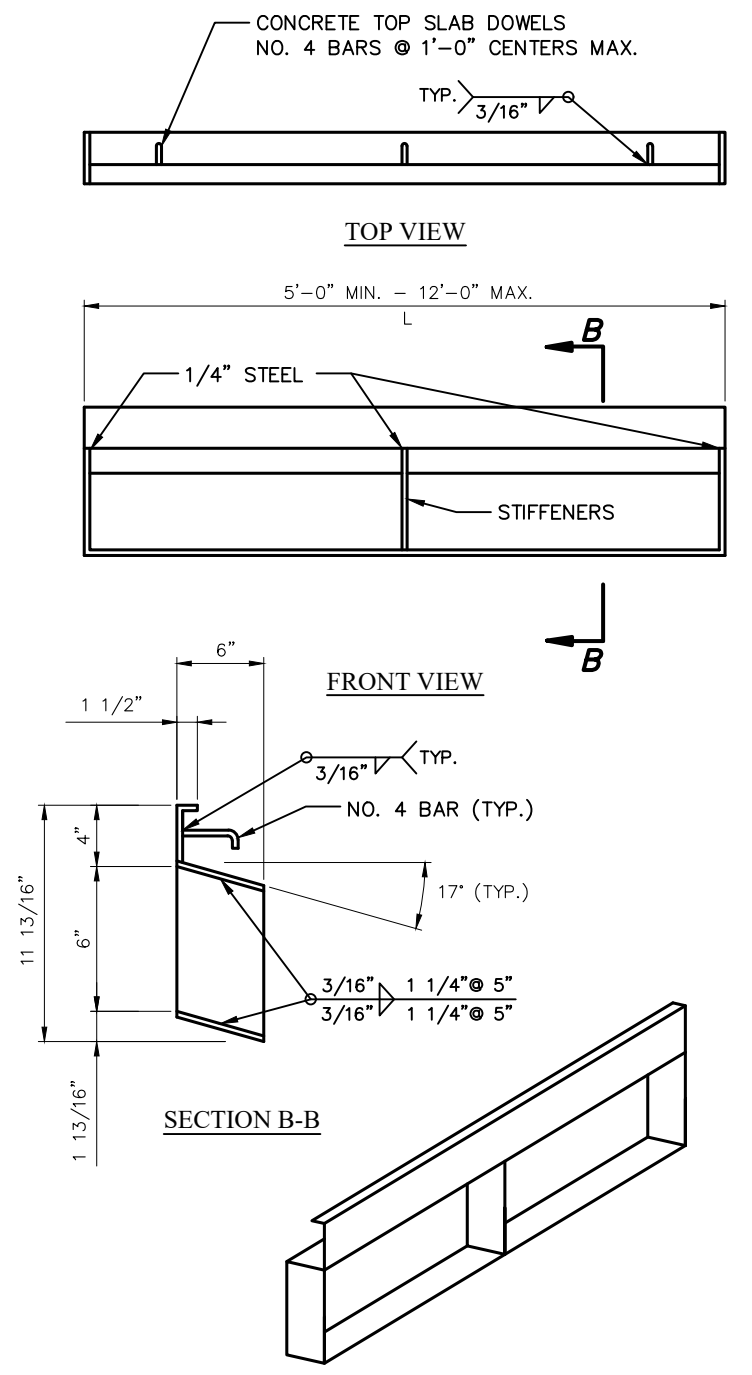
**REBAR DETAIL OF TOP SLAB - PLAN VIEW**  
NOT TO SCALE

**STEEL INLET FRAME NOTES:**

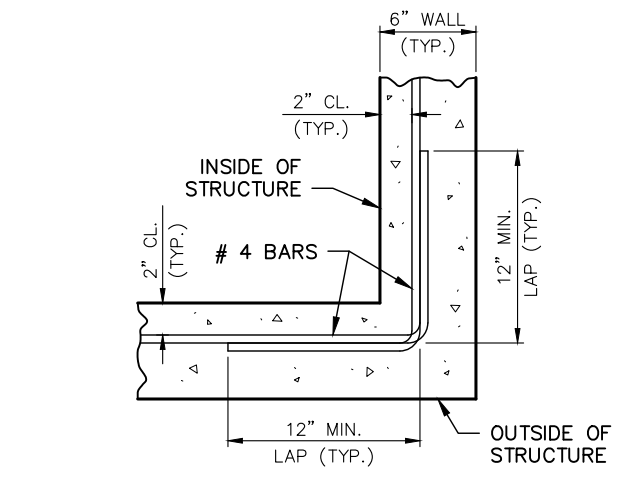
1. ALL WELDS SHALL BE PERFORMED IN ACCORDANCE WITH APPROPRIATE AWS SPECIFICATIONS AND PROCEDURES.
2. ALL WELDS ON EXPOSED SURFACES SHALL BE DRESSED SO AS TO PROVIDE A PLEASING FINISHED SURFACE.
3. THE ENTIRE FRAME SHALL BE GALVANIZED PER ASTM A-123.
4. STEEL INLET FRAME STIFFENERS SHALL BE AT EQUAL INTERVALS NOT TO EXCEED 4'-0".



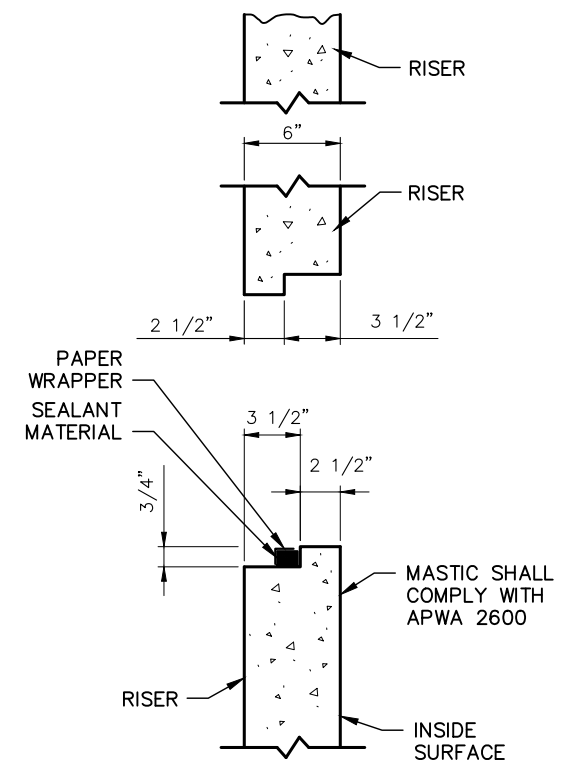
**10" STEEL INLET FRAME DETAIL**  
NOT TO SCALE



**6" STEEL INLET FRAME DETAIL**  
NOT TO SCALE



**WALL CORNER DETAIL - PLAN VIEW**  
NOT TO SCALE



**RECTANGULAR STRUCTURE  
6" WALLS  
OPEN JOINT DETAIL**  
NOT TO SCALE

DO NOT SCALE THESE DRAWINGS FOR DIMENSIONS OR CLEARANCES. ANY QUESTIONS REGARDING DIMENSIONS SHALL BE BROUGHT TO THE ATTENTION OF THE CITY PRIOR TO CONSTRUCTION.

NO.	DATE	BY	NATURE
REVISIONS			

**CURB INLET  
HEAVY DUTY - TYPE DETAILS**

WATER SERVICES  
CITY OF KANSAS CITY, MISSOURI

DEVELOPED BY: STORMWATER STANDARDS

DRAWING NO. **CI-3**

APPROVED BY: \_\_\_\_\_  
DATE: 9/14/2021

1 OF 1