

# KC Water FY23-FY24 Capital Improvements Program

Matt Bond, Deputy Director  
Jeff Martin, Chief Engineering Officer

April 14, 2022





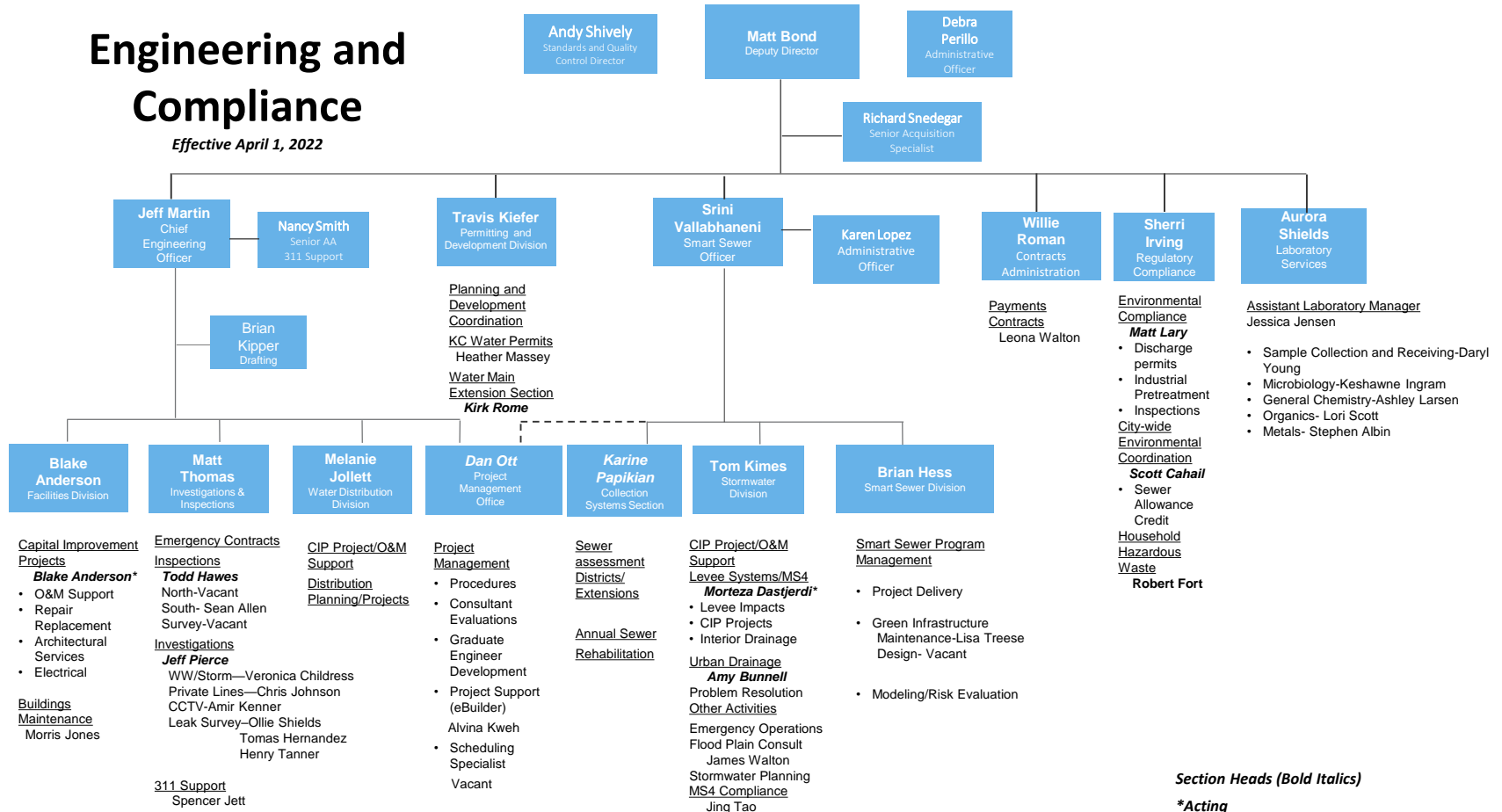
# Engineering and Smart Sewer Updates

***Matt Bond***  
**Deputy Director**



# Engineering and Compliance

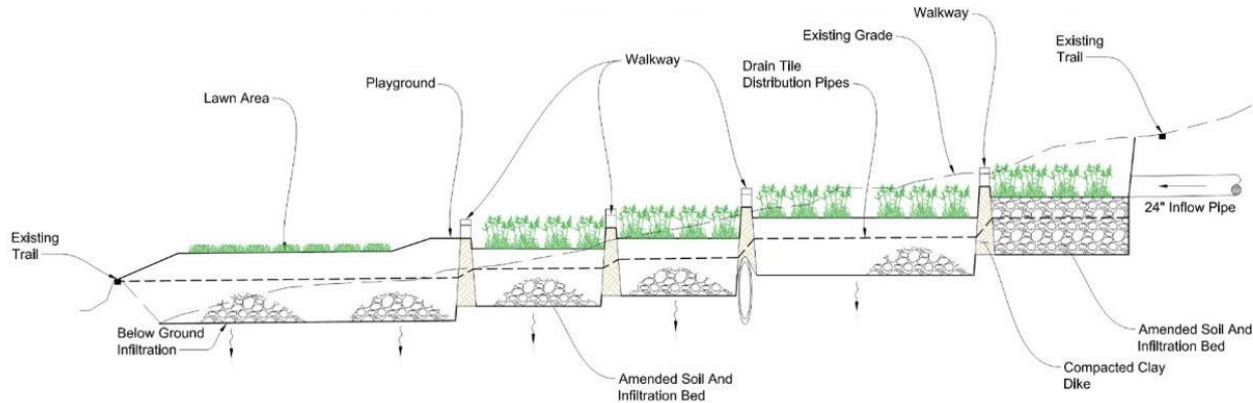
**Effective April 1, 2022**



# Green Infrastructure Project 1:1 Mill Creek Park(Construction)

## Project Highlights

- Tallgrass Prairie Concept
- Includes earthwork, retaining walls, walkways, plantings, and lighting





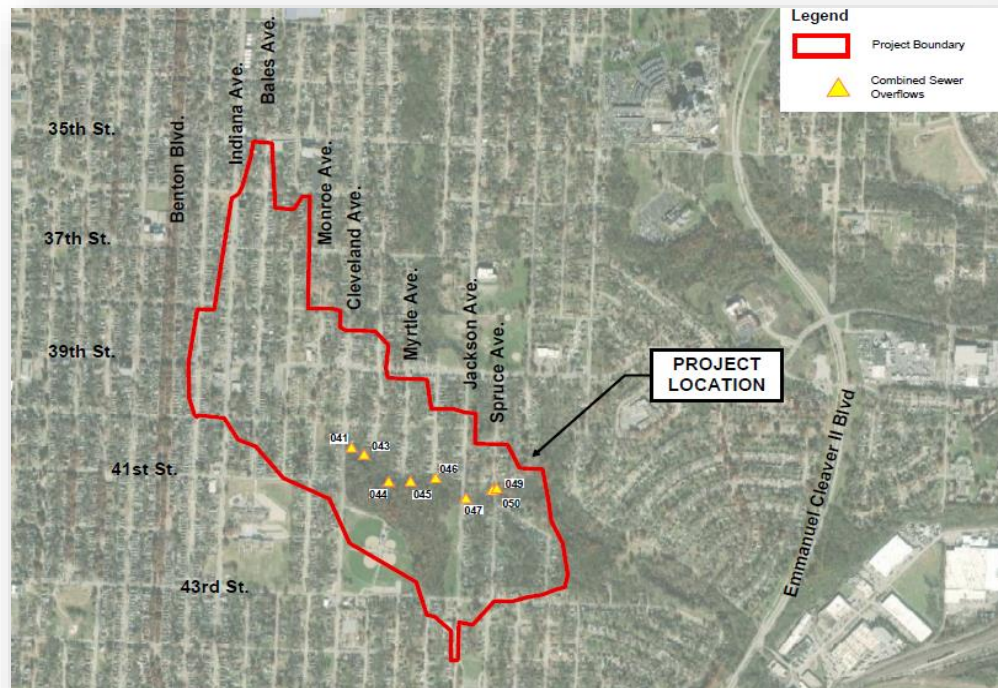
# Sewer Separation: 40<sup>th</sup> and Monroe (Construction)

## Project Area

- 220 acres
- 8 CSO Outfalls

## Work Includes

- 12,000 LF 15" through 60" storm sewer
- 1,000 LF 8" through 15" sanitary sewer
- 5,300 LF Water Main Replacement
- 20,000 LF Sewer Rehabilitation
- 135 EA Manhole Rehabilitation
- Green Infrastructure



# Santa Fe Sewer Rehabilitation Phase 2 (Design-Build)

## Project Highlights

- 120" non-reinforced concrete
- Cast-in-Place Construction
- Proposed as a Design-Build project





# Chief Engineering Officer

*Jeff Martin, PE*

Chief Engineering Officer





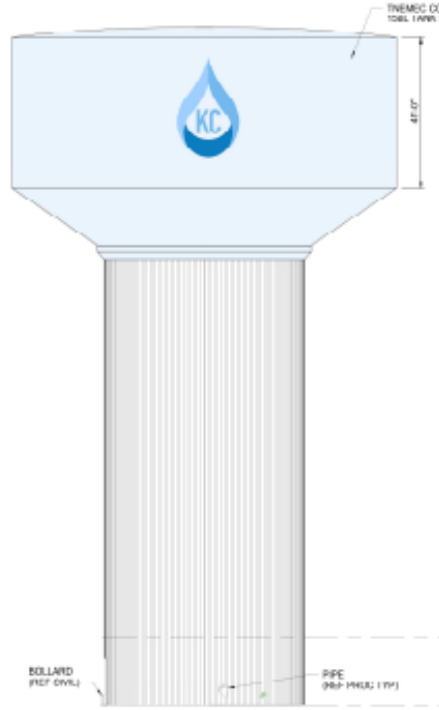
# Water Main Replacement Program

- Current year CIP includes:
  - Distribution main construction projects totaling \$28,300,000
  - 4 additional transmission/distribution main construction projects
    - \$9,450,000 total
    - 1 design-build
  - N Waukomis 36" Transmission Main design contract



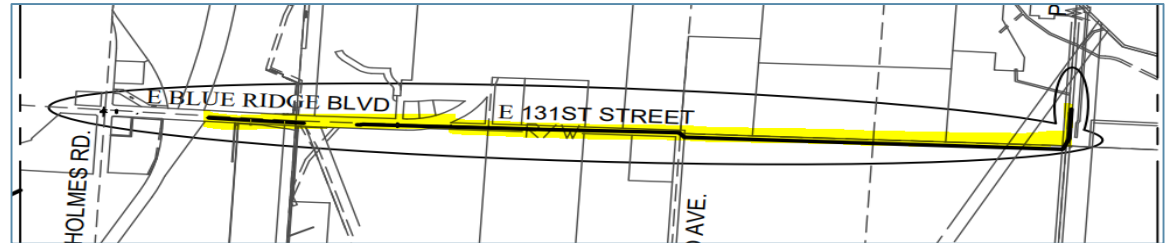


# Prospect Road Elevated Tank and Transmission Main (Construction)



## Projects Include:

- Construction of 3 million gallon elevated storage tank at site of our Blue River Pump Station
- Construction of 16" transmission main from Blue Ridge Blvd and Holmes Rd to serve new tank

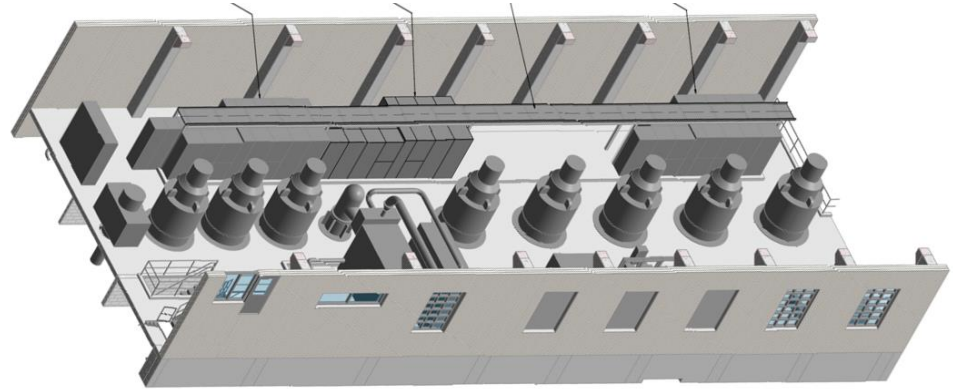


# North Auxiliary Pump Station (Design)



## Project Includes:

- Pump station design to serve future water demands north of the river
- Repurposing of underutilized existing south serving pumps
- Evaluation of pump location within the plant space



# Lab Remodel and Building Renovations (CM at Risk)

## Project Includes:

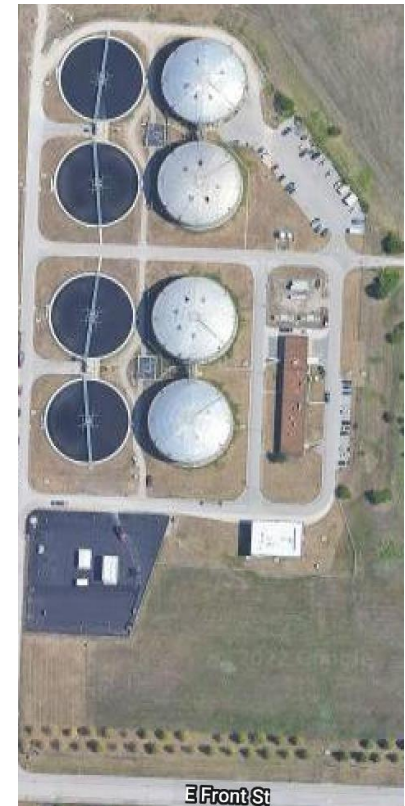
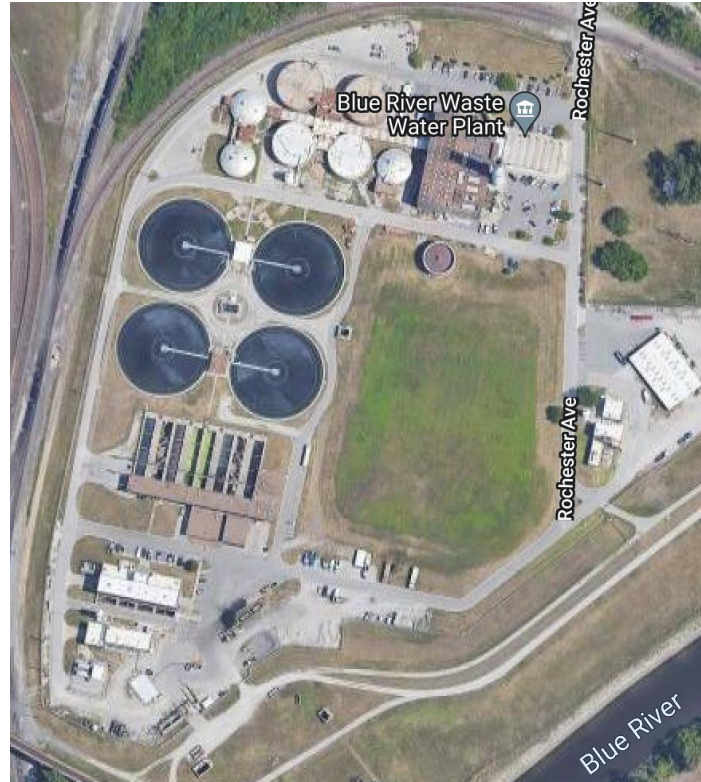
- Remodeling and expansion of KC Water Laboratory building
- Parking lot and site work immediately adjacent to building
- Improved workflow for sample intake and testing operations
- Improved office, employee lunch/break room and meeting areas



# Blue River WWTP Facility Plan (Design)

## Facility Plan Includes:

- Evaluate preliminary treatment upgrades for asset replacement and improved service
- Evaluate primary treatment for wet weather upgrades
- Evaluate secondary treatment system for asset replacement and improved service and future total phosphorus regulations

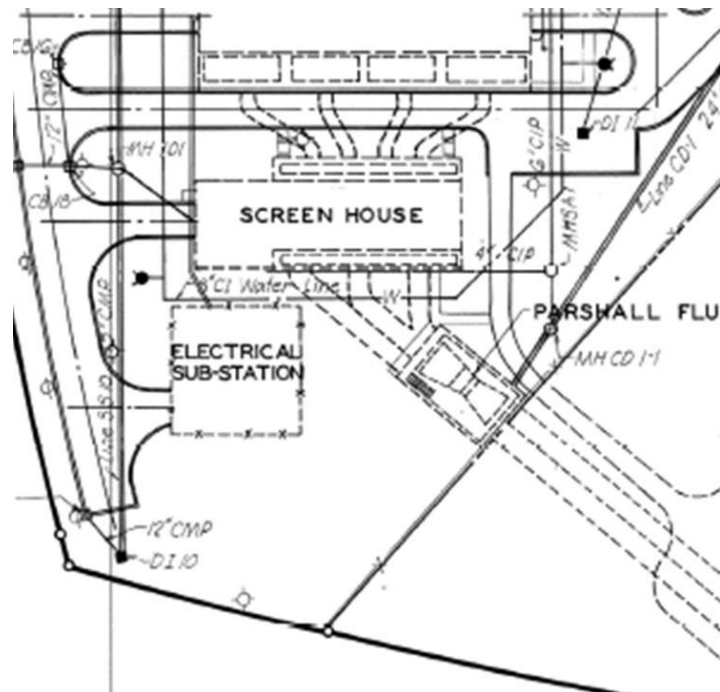




# Blue River WWTP Screen Replacement (Design-Build)

## Project Includes:

- Replacement of mechanical screens
- Modification to the inlet sewer to allow equal distribution of grit and screening
- Channelization of the screen house to prevent wet weather flow from bypassing the screens
- Building envelope and HVAC upgrades



# Westside WWTP Sludge Screening (Design-Build)

## Project Includes:

- Construction of a sludge screening facility north of the secondary clarifier #3 at Westside WWTP
- Odor control
- Sludge storage
- Dumpster for solids storage



## CONTACTS:

[matt.bond@kcmo.org](mailto:matt.bond@kcmo.org)

[jeff.martin@kcmo.org](mailto:jeff.martin@kcmo.org)

[srini.vallabhaneni@kcmo.org](mailto:srini.vallabhaneni@kcmo.org)

[debra.perillo@kcmo.org](mailto:debra.perillo@kcmo.org) 816-513-0188

