



Water Main Replacement

IN THE AREA OF SUMMIT STREET TO CITADEL DRIVE,
NICHOLS DRIVE TO E. 63RD STREET



Meeting Logistics and Protocols

- This meeting is being recorded. The recording will be posted on the KC Water website after its conclusion.
- If you wish to ask a question, please use the “Show Conversation” or “Raise Your Hand” feature at the top of your screen.
- If you are participating by phone and wish to ask a question, please address the meeting moderator when comments or questions from phone participants are requested.
- If you still have questions after the meeting, please contact the project manager. Contact information will be provided at the end of the presentation.

Project Team



Jeff Martin, PE

Chief Engineering Officer

Keenan Riley

KC Water Inspector

John Wright

Pyramid Excavation



Melanie Jollett, PE

Water Distribution Division Head



Jerry Stevens, PE

KC Water Project Manager

THREE UTILITIES



Water



Wastewater



Stormwater

ASSETS



1 Water Treatment Plant
18 Pump Stations
2,800 Miles of Water Main
35,000 Valves
23,000 Fire Hydrants



6 Wastewater Treatment Plants
39 Pump Stations
2,800 Miles of Sewer Main
67,000 Manholes



630 Miles of Storm Sewer
53,000 Storm Inlets
15 Stormwater Pump Stations
13.5 Miles of Levee

OUR WATER SOURCE



Water Main Replacement Program

- KC Water distribution system includes ~2,800 miles of water mains.
- Some water mains date back to the 1800s.
- Aging infrastructure is a nationwide challenge.
- KC Water WMR Program is to replace **1% per year, or 28 miles**, each year.
- The WMR Program is in its 8th year, and we've replaced more than **200 miles** to date.



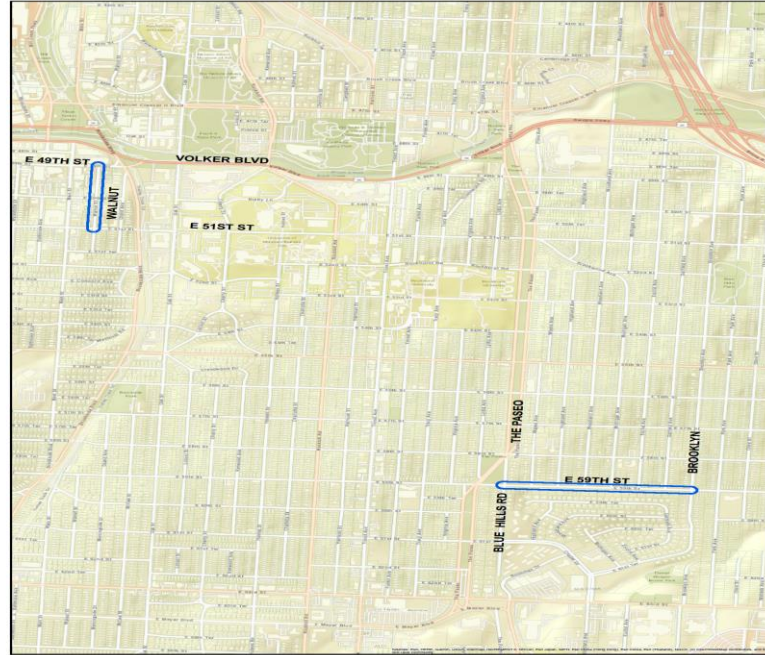
Data-Driven Priorities

- Evaluation of water main condition
- Risk of water mains is determined based on:
 - Likelihood of Failure
 - Consequence of Failure
- WMR Projects are developed and designed; new mains are zinc coated ductile iron wrapped in a polyethylene sleeve.
- This long-term infrastructure plan will reduce service interruptions due to **breaks**, reduce **costs**, and increase **capacity and fire protection**.



Upgrading Your Water Mains

WATER MAIN REPLACEMENT IN THE AREA OF
SUMMIT TO CITADEL DRIVE, NICHOLS DRIVE TO E 63RD ST
KANSAS CITY, JACKSON COUNTY, MISSOURI



Contract # 9300
Project No. 80002046

What Happens on Your Block

- Mark utilities and pothole to verify locations and elevations.
- Traffic control plan implemented.
- Saw cut pavement; Excavate narrow trench; Bury new pipe in gravel.
- Construct temporary connection; Test and disinfect the new water main.

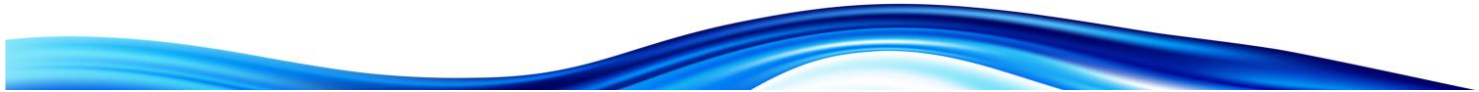
May take a week or more; you'll see little activity

- With both new and old water mains in service, transfer customer service lines to the new pipe.

If your meter is inside, we'll remove it and install a new one in your yard

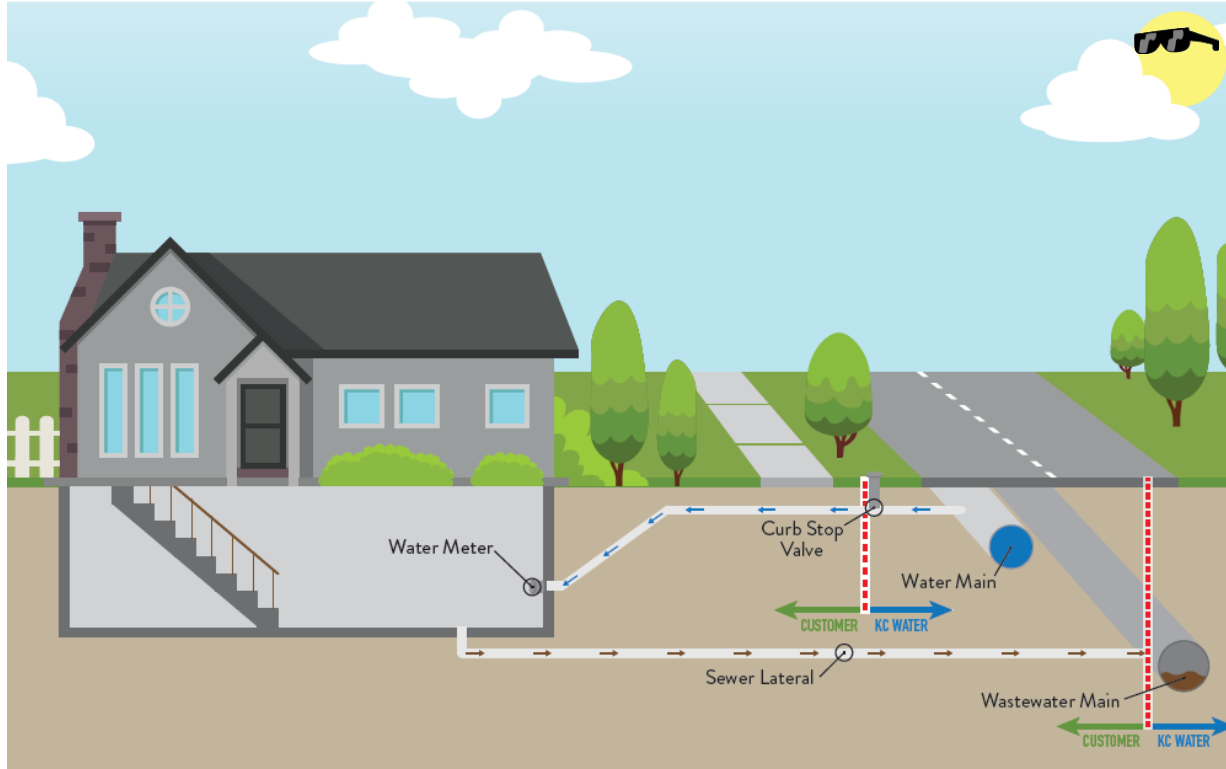
- Construct permanent connection and abandon the old water main
- Restoration – temporary and permanent

We will restore curbs, sidewalks, driveways and, in season, lawns we disturb



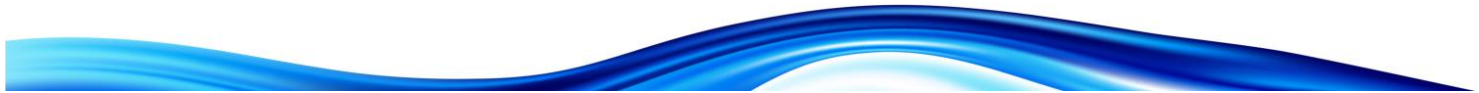
What to Expect

- Large equipment will be in use, creating noise and dusty conditions which will be controlled.
- Water service will be interrupted for short periods of time. You will be notified beforehand with door hangers or by other means.
- Affected curbs, driveways, and other pavement will be restored per KCMO Public Works Department Standards.
- Disturbed established lawn areas will be sodded after work is completed and as the season permits; other areas seeded.
- Ordinary travel routes may be temporarily restricted.
- Reduces the chance of a water main break in the future.
- Fire protection will be enhanced in the neighborhood.



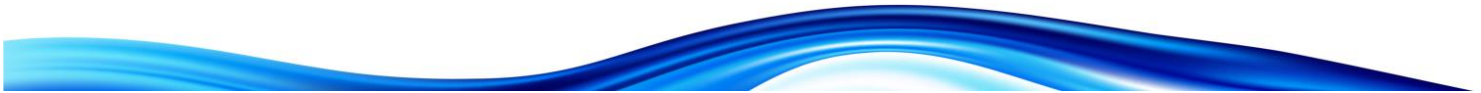
Project Sequencing and Duration

- Notice to Proceed will be issued on December 16, 2021 and Contractor will start the first week of January 2022
- Work to be completed by August 2022
- 2 separate locations
- Start on water main replacements on Walnut Street
- Other locations to be scheduled following completion of the initial replacements.
- Contractor to provide written notice prior to start of work in your neighborhood.



Schedule and Logistics

- Anticipated start date: the first week of January 2022
- For more information:
 - Postcard invitation to this meeting
 - www.kcwater.us/projects/current-projects and find this project for an information sheet
 - John Wright, Pyramid Excavating, 816-765-4464
 - Keenan Riley, KC Water Inspector, Mobile 816-507-4602
 - Jerry Stevens, KC Water Project Manager, 816-513-0446





QUESTIONS?





THANK YOU.

Jerry Stevens, Project Manager, KC Water

Jerald.stevens@kcmo.org

816.513.0446

