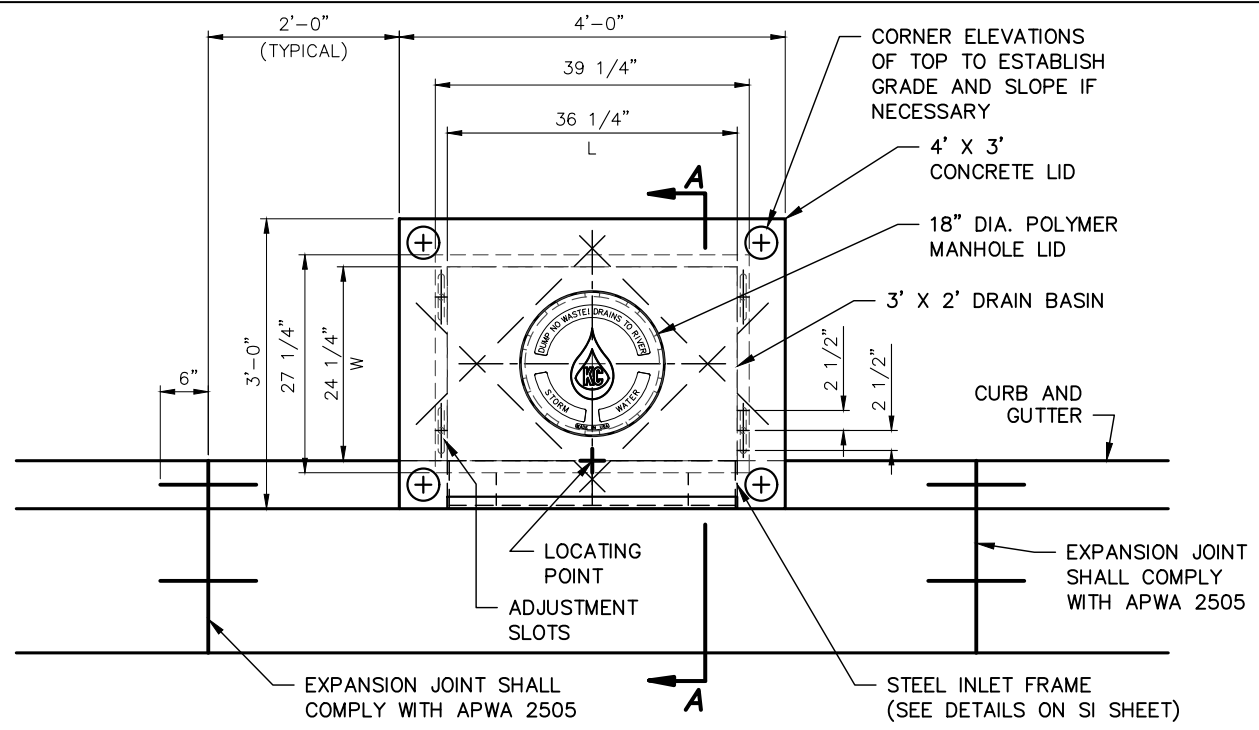
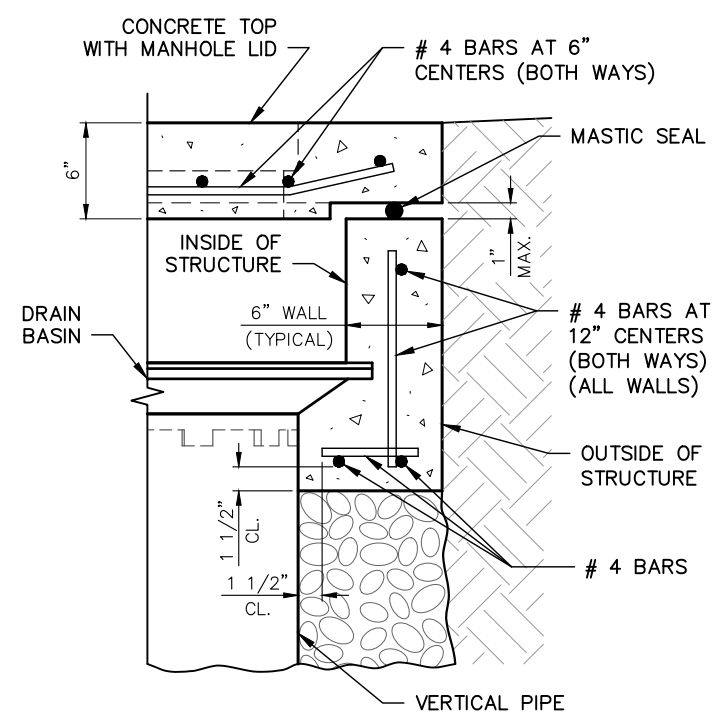


1 February 2021:1 MONOCHROME.CTB KIPPER, BRIAN P:\DESIGN DRAFTING\KCMO\STANDARD & SPEC DRAWINGS\STORMWATER\STORMINLET-GRADEDETAILS\CI-5.DWG

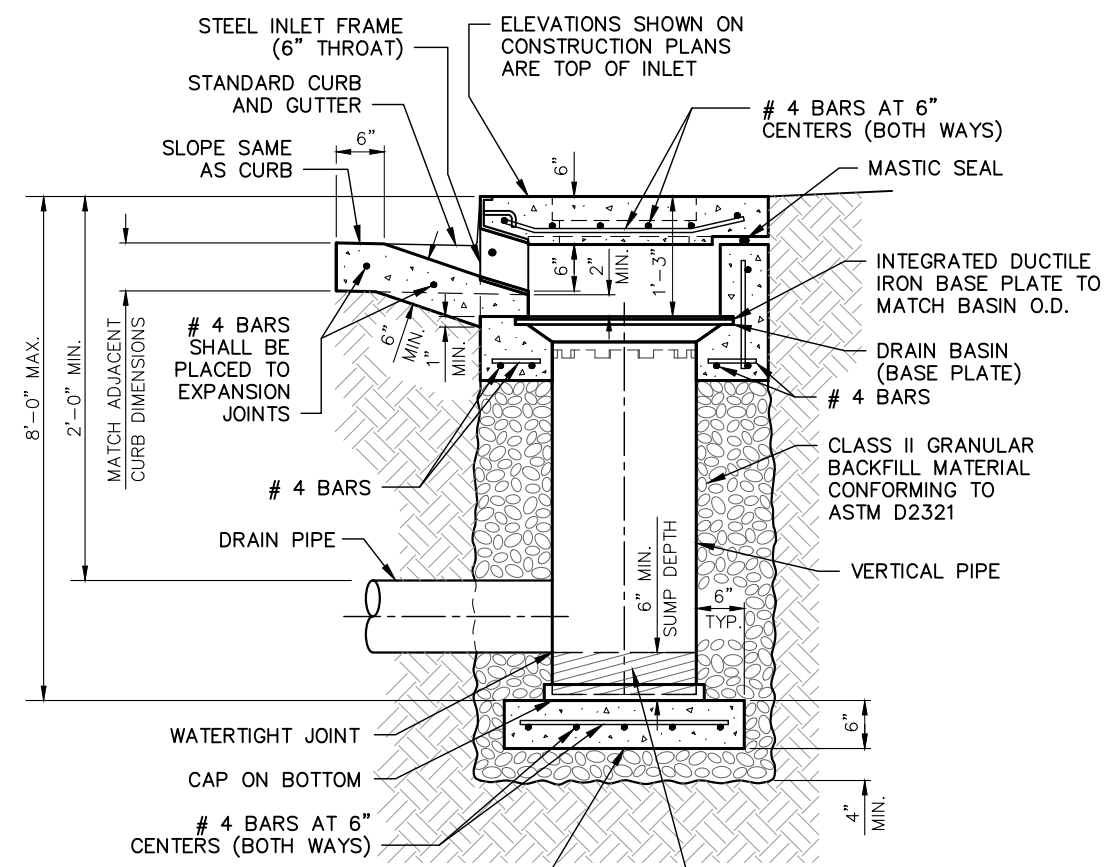


CURB INLET - PLAN VIEW
SCALE: 1/2" = 1' - 0"

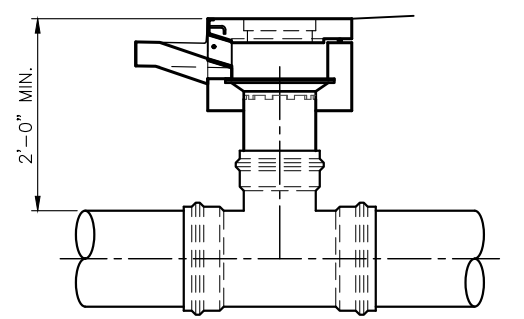


TOP - WALL DETAIL
NOT TO SCALE

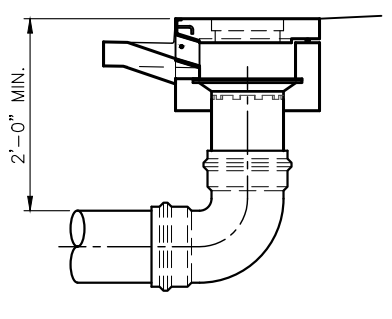
- NOTES:**
1. ALL WORK SHALL MEET THE REQUIREMENTS OF APWA-KCMO 2600.
 2. CURB INLET TYPE 5, CI-5, SHALL BE USED IN LIMITED SPACE CONDITIONS AND WHEN FLOWS ARE WITHIN INLET CAPACITY ONLY WITH WATER SERVICES' APPROVAL.
 3. INLETS SHALL BE SET LEVEL. PROVIDE CORNER ELEVATIONS TO ESTABLISH GRADE AND SLOPE.
 4. THE FIRST DIMENSION LISTED IN THE CONSTRUCTION NOTES IS THE "L" DIMENSION. THE SECOND DIMENSION IS THE "W" DIMENSION.
 5. LOCATE KCMO STANDARD MH-RC RING AND COVER IN CENTER OF LID FOR INLETS 8 FEET AND LESS. LOCATE KCMO STANDARD MH-RC RING AND COVER AT EACH END WHEN INLET IS OVER 8 FEET IN LENGTH.
 6. BEVEL ALL EXPOSED EDGES WITH 3/4" CHAMFER OR 1/2" TOOLED EDGE.
 7. FLOOR OF INLET SHALL BE SHAPED WITH INVERT TO PROVIDE SMOOTH FLOW.
 8. REINFORCING STEEL SHALL BE NEW BILLET, MINIMUM GRADE 60 AS PER ASTM A615, AND SHALL BE BENT COLD.
 9. ALL DIMENSIONS RELATIVE TO REINFORCING STEEL ARE TO CENTERLINE OF BARS. 2" CLEARANCE SHALL BE PROVIDED THROUGHOUT UNLESS NOTED OTHERWISE. TOLERANCE OF +/- 1/8" SHALL BE PERMITTED.
 10. ALL CURB INLET TOPS ARE TO BE CONSTRUCTED AFTER FINAL CURB LINE HAS BEEN APPROVED BY THE CITY AND PRIOR TO CURB CONSTRUCTION.
 11. THE STRUCTURE ELEVATION SHOWN ON THE PLANS IS THE TOP SURFACE OVER THE LOCATING POINT.
 12. ALL SURFACES CONTACTING SIDE AND BACK OF INLET SHALL MATCH AT EDGE OF LID TOP.
 13. THE VERTICAL PIPE SHALL BE 12" MINIMUM RCP CLASS III OR HIGHER; DUCTILE IRON PIPE, CLASS 52; PVC SDR 26 OR APPROVED EQUAL.
 14. ALL CONCRETE SHALL BE 4,000 PSI MINIMUM.
 15. A 1/2" JOINT FILLER SHALL BE PLACED BETWEEN ADJOINING CONCRETE SURFACES AND INLET.
 16. TRAFFIC LOADS H25.
 17. CONCRETE BASE OPTIONAL BASED ON DESIGN.



**SECTION A - A
CURB INLET**
SCALE: 1/2" = 1' - 0"



**SECTION A - A
ALTERNATE TEE OPTION DETAIL**
NOT TO SCALE



**SECTION A - A
ALTERNATE BEND OPTION DETAIL**
NOT TO SCALE

DO NOT SCALE THESE DRAWINGS FOR DIMENSIONS OR CLEARANCES. ANY QUESTIONS REGARDING DIMENSIONS SHALL BE BROUGHT TO THE ATTENTION OF THE CITY PRIOR TO CONSTRUCTION.

NO.	DATE	BY	NATURE
REVISIONS			

THERMO-MOLDED PVC INLET
LIMITED SPACE IN CURB - TYPE II DETAILS

WATER SERVICES
CITY OF KANSAS CITY, MISSOURI

DEVELOPED BY: **STORMWATER STANDARDS**

DRAWING NO. **CI-5**

APPROVED BY: _____
DATE: 2/01/2021